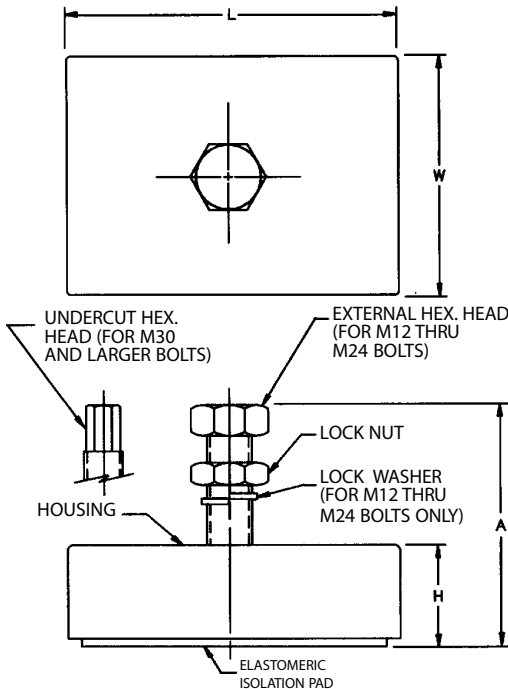
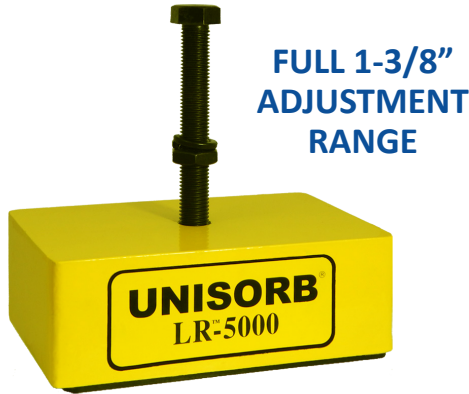




INSTALLATION SOLUTIONS

LEVEL-RITE® MACHINERY MOUNTS



UNISORB'S line of LEVEL-RITE mounts are superbly engineered, unbreakable, and perfectly suited for general purpose machine leveling and isolation usage. Precision-engineered ductile-iron mounts with a 1-3/8 inch adjustment range, proprietary elastomer isolation, and a stable rectangular design that delivers accurate leveling and superior vibration control on uneven floors. Available in nine sizes.

The isolation pads of all UNISORB LEVEL-RITE mounts are made from proprietary elastomers. The unique internal design eliminates the interdependence between vertical and horizontal stiffness found in other mount designs. This unique design ensures that each mounting point presents consistent vertical and horizontal load deflection characteristics, regardless of adjustment height. LEVEL-RITE mounts are unmatched in controlling extreme machine induced dynamic loads, thus eliminating excessive machine motion and preventing failures typical of most other general-purpose mounts.

The LEVEL-RITE mount features a high strength, grade 5 hex. head adjusting bolt that will withstand punishment which would shear off most other bolts. The finer thread pitch provides greater accuracy in adjustment. LEVEL-RITE mounts feature adjusting bolts with metric threads. Special bolt lengths and configurations are available on request.

The rectangular shape of the UNISORB LEVEL-RITE mounts provides another important advantage. While providing greater resistance to walking than circular mounts, the straight leading edge surface on the rectangular mounts has proven to be more geometrically stable.

This helps eliminate pad roll and entrapment of coolants and oils beneath the pad. The exceptionally high coefficient of friction provided by these elastomeric pads also prevents machine walking.

Mount loadings are expressed in pounds as shown in the chart below. To determine the approximate load applied by a particular machine, divide the total weight by the number of mounting points. Note that in certain cases, where weight distribution may load one or more mounts significantly more than others, special consideration is required. When machinery generating high impact is being mounted, reduce the mount rating by 25% to assure maximum performance.

Specifications

LEVEL-RITE MOUNT	Product Code	Max. Load (LBS.)	A	L	W	H Min/Max	Standard Bolt Size	Max. Mach. Foot Th.
LR-2500	574200	2500	7.78	5.50	3.50	2.50/3.88	M12 x 1.75 x 150	2.27
LR-5000	574300	5000	7.77	7.00	4.50	2.50/3.88	M16 x 2 x 150	2.08
LR-7500	574400	7500	7.88	8.00	5.00	2.50/3.88	M20 x 1.5 x 150	1.91
LR-12000	574500	12000	9.94	8.00	5.88	2.50/3.88	M24 x 2 x 150	3.65
LR-16000	574600	16000	10.32	10.00	7.88	3.25/4.62	M24 x 2 x 150	3.40
LR-25000	574700	25000	10.74	12.50	9.00	3.50/4.88	M30 x 2 x 200	3.53
LR-35000	574800	35000	11.09	16.00	12.50	4.50/5.88	M36 x 2 x 250	4.52

Dimensions are in inches except as shown.

For mounts with higher load capacities contact Unisorb Engineering.



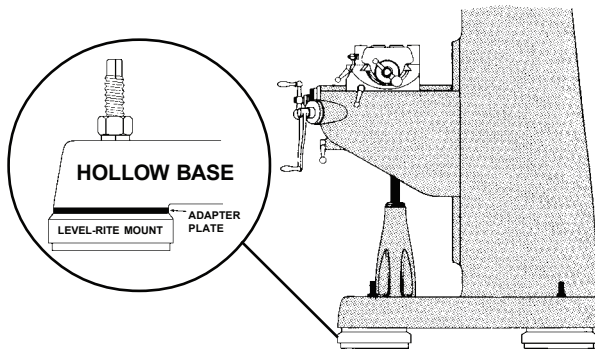
IN CANADA PLEASE CALL : 888-625-8944
1515 Matheson Blvd., East, Unit C-10,
Mississauga, Ontario L4W 2P5

4117 FELTERS ROAD, MICHIGAN CENTER, MI 49254
517-764-6060 • 888-486-4767
www.UNISORB.com



INSTALLATION SOLUTIONS

LEVEL-RITE® MACHINERY MOUNTS FOR HOLLOW BASE MACHINES

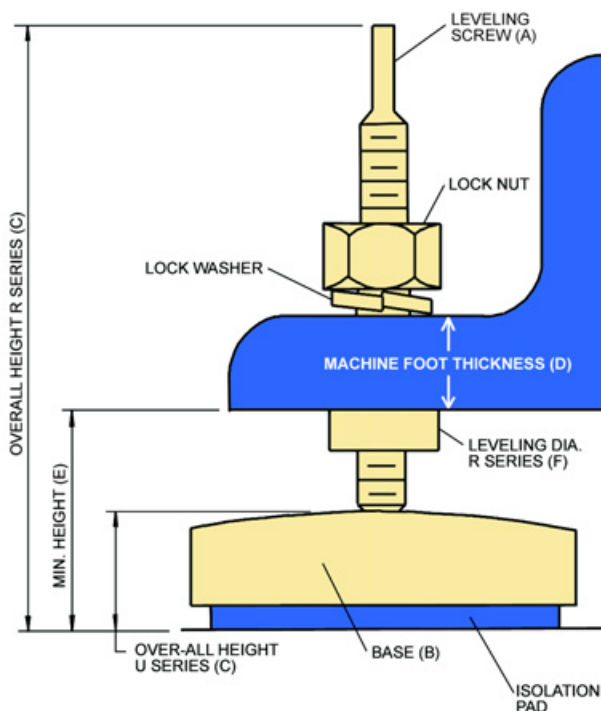


Designed for hollow bases as found on certain models of mills, lathes, grinders and other machines. Provides vibration control, leveling and support.

Kit includes mounts with special length adjusting screws and adapter plates. Specify distance between bolt holes when ordering. Standard kits accommodate these distances:

- BP-2500 Kit 19.25" - 20.75"
- BP-5000 Kit 23.25" - 24.75"
- BP-5000S Kit 25.25" - 26.75"

Other spacings are available on request.



LR-200 AND LR-500



The LR-200 and LR-500 are designed for lighter equipment applications. The LR-200 is for loadings up to 250 lbs per mount and the LR-500 is for up to 500 pounds. Both models have steel bases, elastomeric isolation pads, and built-in leveling screws.

R SERIES

The R Series are self-contained leveling mounts with 1/2" thick elastomeric pads for all types of machinery.

Rugged cast iron and anodized steel construction with a free-floating leveling screw offer vertical adjustments of up to 2". They will also compensate for pitched or uneven floors.



U SERIES

The U Series self-contained mounts with elastomeric pads are designed to accept machinery leveling screws and are supplied without leveling accessories. Their rugged, heavy duty construction is designed for precision and finishing equipment.



Specifications

MODEL	MAX	A	B	C	D	E	F
LR-200	250	5/16 - 18	2 1/8 Dia.	3 1/2	2 1/2	5/16	1 1/4
LR-500	500	3/8 - 16	3 1/2 Dia.	4 1/2	2 3/4	5/8	2 1/2
R9	900	M12x1.75	3x3	7	2 3/4	1 3/4	1 3/4
R16	1,600	M16x2	4x4	7	2 3/4	1 3/4	1 3/4
R28	2,800	M16x2	4x4	7	2 3/4	1 3/4	1 3/4
R36	3,600	M24x3	6x6	7 1/2	2 3/4	2 5/8	2 1/4
R48	4,800	M16x2	4x4	7	2 3/4	1 3/4	1 3/4
R100	10,800	M24x3	6x6	7 1/2	2 3/4	2 5/8	2 1/4
U9	900	—	3x3	1	—	—	—
U16	1,600	—	4x4	1	—	—	—
U28	2,800	—	4x4	1	—	—	—
U36	3,600	—	6x6	1 1/2	—	—	—
U48	4,800	—	4x4	1	—	—	—
U100	10,800	—	6x6	1 1/2	—	—	—



IN CANADA PLEASE CALL : 888-625-8944
 1515 Matheson Blvd., East, Unit C-10,
 Mississauga, Ontario L4W 2P5

4117 FELTERS ROAD, MICHIGAN CENTER, MI 49254
 517-764-6060 • 888-486-4767
 www.UNISORB.com