



**IN CANADA PLEASE CALL : 888-625-8944**

1515 Matheson Blvd., East, Unit C-10,  
Mississauga, Ontario L4W 2P5



INSTALLATION SOLUTIONS

# UNISORB RK Fixator<sup>®</sup>

The Original RK Precision Alignment System



# Table of Contents

- 1 RK Fixator® Applications
- 2 RK Fixator® Technical Specifications
- 3 RK Fixator® Option Specifications

- 3 - Options wes and we/2
- 4 - Options p, r, and z
- 5 - Options ste and ste/2
- 6 - Options c and le
- 7 - Options d and dz
- 8 - Option m
- 9 - Options les, mon, and frot

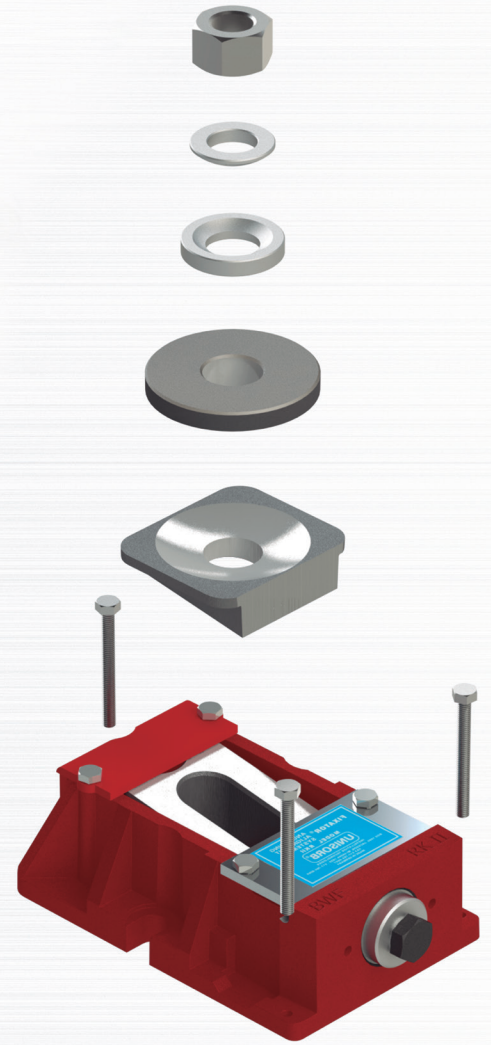
## 10 RK Fixator® Installation Instructions

- 10 - Installation Overview

## 14 Standard Installation Drawings

- 14 - Option wes (469900-02)
- 15 - Option ste on steel plate (469900-03)
- 16 - Steel plates with Option ste (469900-03A)
- 17 - Option ste (469900-04)
- 18 - Option ste and c (469900-05)
- 19 - Option ste and c (469900-05A)
- 20 - Options ste, c, and d (469900-06)
- 21 - Options wes and m (469900-07)
- 22 - Option wes, m, and d (469900-08)
- 23 - Options wes on steel plate (469900-10)
- 24 - Steel plates with Option wes (469900-10A)
- 25 - Options ste and m (469900-12)
- 26 - Options ste, m, and d (469900-14)
- 27 - Options wes, c, and d (469900-15)
- 28 - Option ste, steel plate, IB-500 (469900-17)

## 29 Proper Grouting Procedure



**IN CANADA PLEASE CALL : 888-625-8944**  
1515 Matheson Blvd., East, Unit C-10,  
Mississauga, Ontario L4W 2P5



# RK Fixator Applications

## Why Unisorb RK Fixators?

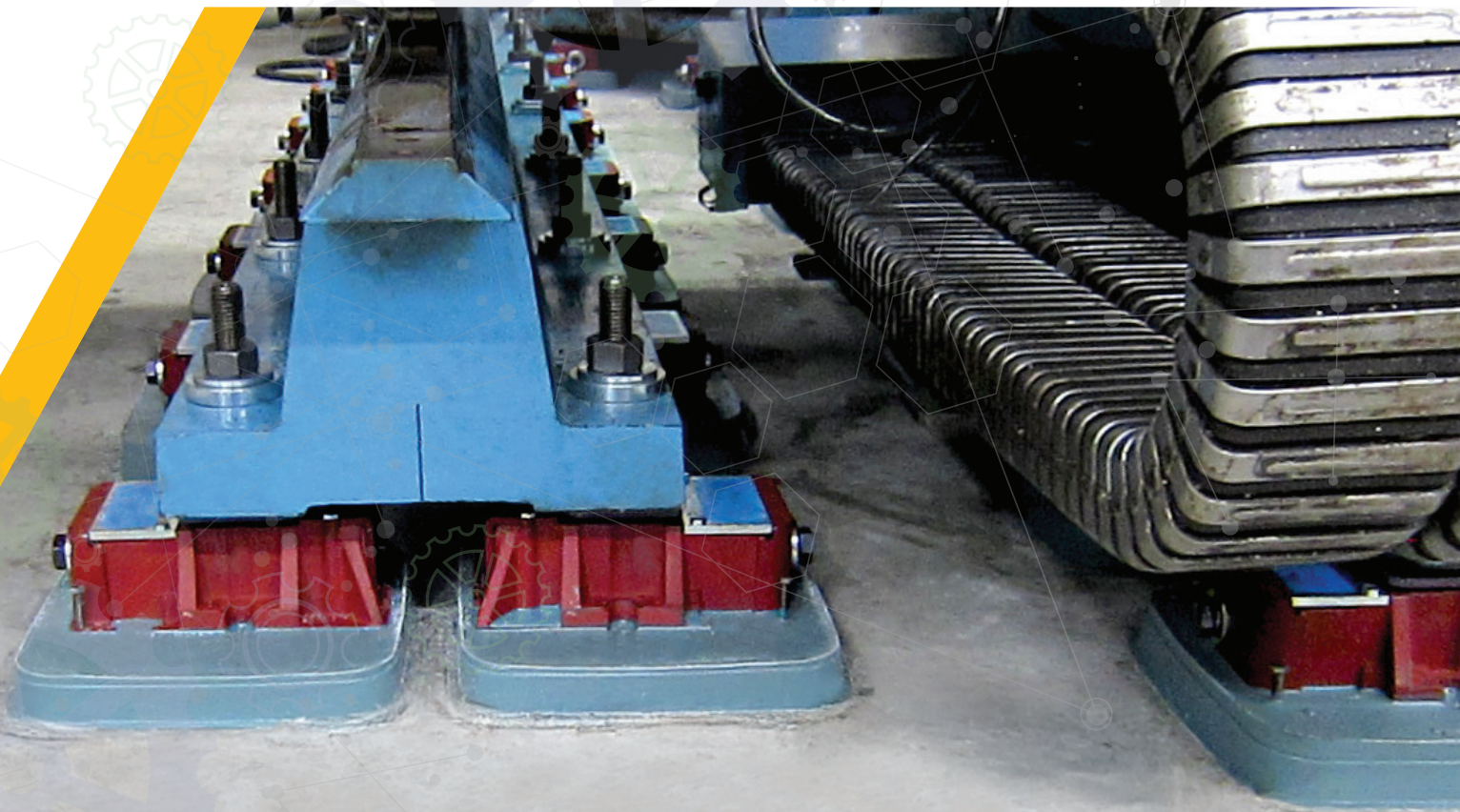
Many precision machines require support from their foundation to maintain critical alignments. Equipment that handles heavy parts, experiences rapid load changes, or demands geometric alignment at installation all benefit from a stable, precise connection to the foundation.

The UNISORB RK Fixator system delivers that connection while making installations faster, more accurate, and more reliable.

Key Advantages of RK Fixators:

- ⦿ **Faster, simpler installations:** Alignment adjustments can be made after anchor nuts are tightened using only a small hand wrench, eliminating the trial and error of conventional methods.
- ⦿ **Long-term machine accuracy:** Once aligned, machines remain stable. Reduced downtime from drift, settlement, or releveling extends machine life and ensures consistent performance.
- ⦿ **Micro-level precision:** The patented three-piece wedge design achieves alignment to tenths of a thousandth of an inch under full load while providing true vertical lift that avoids lateral forces.
- ⦿ **Built-in adaptability:** Uneven foundations or machine bases are automatically compensated for. Multiple sizes and a wide range of options fit nearly any installation requirement.
- ⦿ **Durability:** Molykoted load-bearing surfaces and specially designed high-yield anchor bolts require no maintenance under normal conditions and ensure long service life.

The RK Fixator is more than a leveling device. It is an investment in installation speed, operational uptime, and the long-term performance of critical machinery.



# RK Fixator Technical Specifications

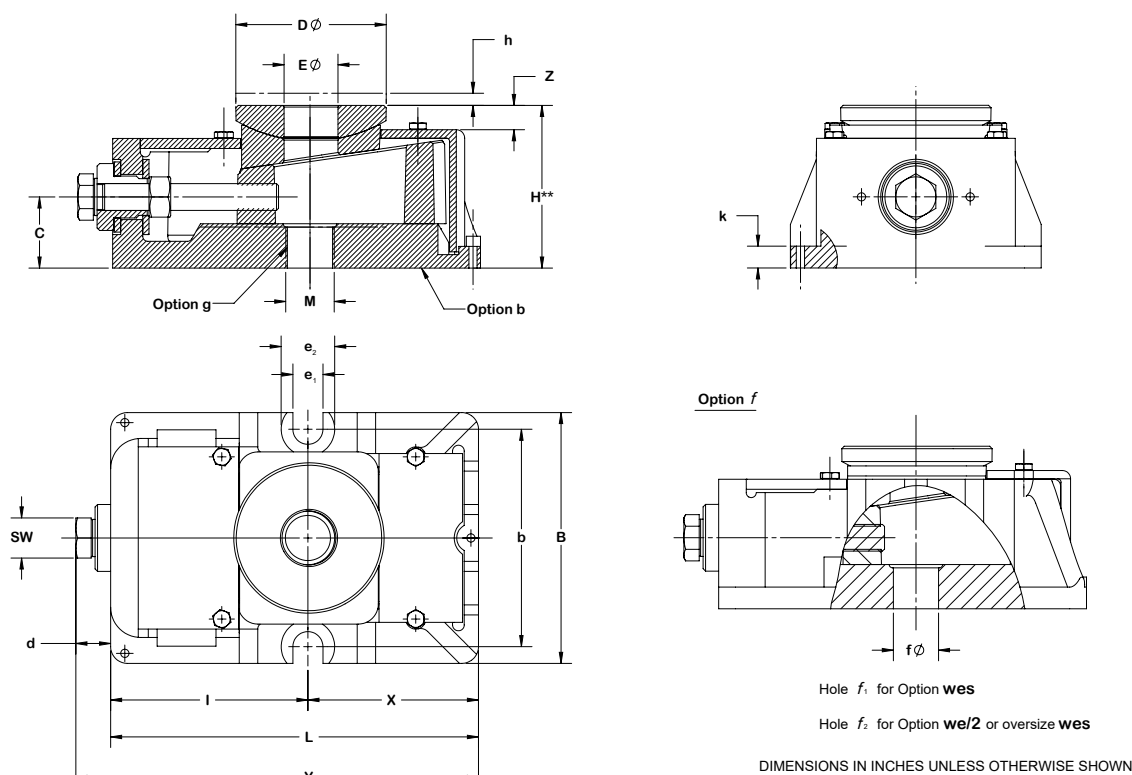
## RK Fixator Technical Specifications

		RKI		RKII		RKIII		RKIV		RKV		RKVI	
Rec. machine dead weight <sup>1</sup>	N/lbs	10,000	2,200	20,000	4,400	40,000	8,900	60,000	13,400	120,000	26,900	200,000	44,900
Max. Allowable Lift Load/RK	N/lbs	90,000	20,000	120,000	26,500	240,000	53,500	360,000	80,500	700,000	157,000	1,200,000	269,500
Spring constant	N/ $\mu$ m/lbs/in.	2,000	11,420,000	4,500	25,695,000	8,000	45,681,000	10,000	57,101,000	14,000	79,942,000	18,000	102,782,000
Vertical adj. / rev.	mm/in	0.25	0.010	0.25	0.010	0.29	0.012	0.35	0.014	0.43	0.017	0.50	0.020
Max. vertical adj.	mm/in	5	0.20	5	0.20	6	0.24	8*	0.32*	10	0.40	13	0.51
Approx. torque to turn adjusting screw	Nm/1000kg Ft-lb /1000 lbs load	3	1.0	3	1.0	4	1.3	4.5	1.5	5.5	1.8	7	2.3
Max. allowable torque on adj. screw	Nm / ft lb	27	20	36	27	96	71	160	118	385	284	700	516
Approx. torque on anchor bolt nut at yield point of bolt	Nm / ft lb	140	103	270	199	450	332	900	664	1,600	1,180	2,700	1,991
Approx. tension on anchor bolt nut at yield point	N/lbs	53,000	11,900	81,000	18,200	115,000	25,800	182,000	40,900	265,000	59,500	385,000	86,500
Weight of basic unit	kg/lbs	4	8.8	5.5	12.1	11.5	25.3	21	46.2	42	92.4	70	154.3

## RK Fixator Dimensions\*\*\* (mm/in)

RK	M	L	B	H**	D $\phi$	SW	E $\phi$	d	c	z	h	l	b	e <sub>1</sub>	e <sub>2</sub>	k	X	Y	f <sub>1</sub> $\phi$	f <sub>2</sub> $\phi$
I	M12	175/6.89	105/4.13	55/2.17	60/2.36	19mm	20/0.79	16/0.63	21/0.83	13/0.51	5/0.20	92/3.62	90/3.54	14/0.55	26/1.02	12/0.47	83/3.27	191/7.52	17/0.67	19/0.75
II	M20	178/7.01	120/4.72	75/2.95	75/2.95	19mm	26/1.02	15/0.59	31/1.22	15/0.59	5/0.20	96/3.78	100/3.94	14/0.55	26/1.02	13/0.51	82/3.23	193/7.60	21/0.83	25/0.98
III	M24	220/8.66	150/5.91	95/3.74	90/3.54	24mm	32/1.26	22/0.87	40/1.57	17/0.67	6/0.24	118/4.65	130/5.12	18/0.71	32/1.26	22/0.87	102/4.02	242/9.53	25/0.98	31/1.22
IV	M30	275/10.83	180/7.09	115/4.53	110/4.33	30mm	40/1.57	24/0.94	49/1.93	17/0.67	8/0.31	142/5.59	160/6.30	24/0.94	38/1.50	24/0.94	133/5.24	299/11.77	31/1.22	37/1.46
V	M36	345/13.58	230/9.06	135/5.31	150/5.91	36mm	48/1.89	34/1.34	58/2.28	20/0.79	10/0.39	180/7.09	205/8.07	28/1.10	46/1.81	34/1.34	165/6.50	379/14.92	37/1.46	44/1.73
VI	M42	420/16.54	270/10.63	165/6.50	200/7.87	46mm	80/3.15	34/1.34	67/2.64	32/1.26	13/0.51	230/9.06	245/9.65	28/1.10	46/1.81	31/1.22	190/7.48	454/17.87	58/2.28	---

\*\*Height with machine base (Option b), for standard casting, add 0.08" (approximately) \*\*\*Casting dimensions may vary.



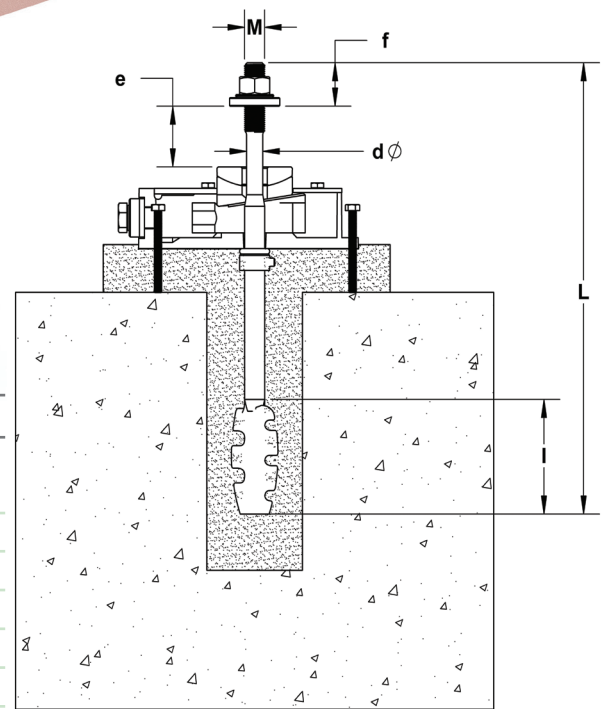
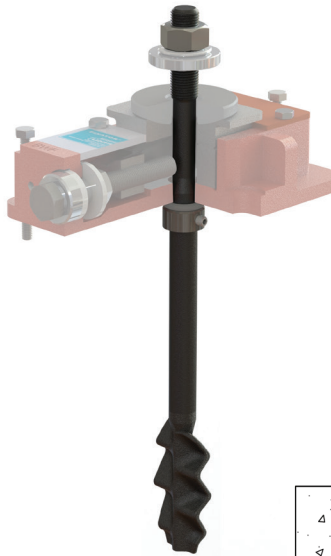
# RK Fixator Options

## wes

**Through Type Anchor/Hold Down Stud** for the direct connection of the machine to the foundation.

Note: Specify "f1" (Basic Model Option) in your order.

Sizes II, III and IV permit the use of the next size larger anchor bolt to improve safety under extremely high tensile loads. When selecting the anchor, however, the maximum allowable load must never be exceeded.



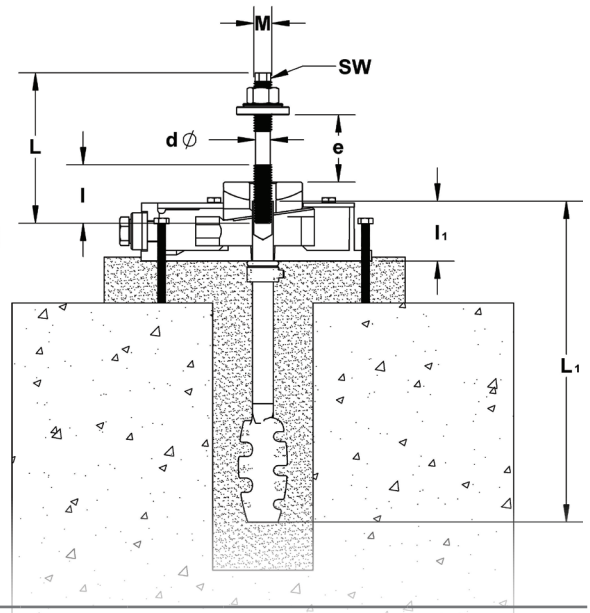
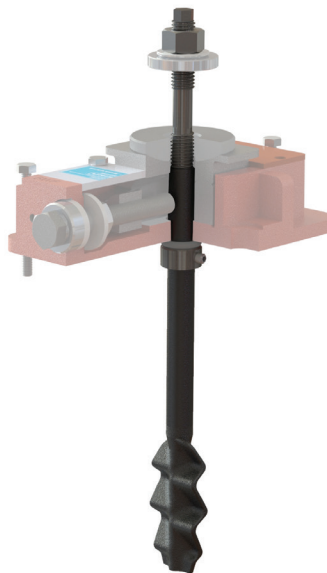
**Option wes (mm/in)**

RK	M	L	l	f	dφ	'e'		Approx. Clamping Force N/lbs
						from	to	
I	M16	330/12.99	90/3.54	30/1.18	13/0.51	20/0.79	60/2.36	53.000/11,900
II	M20	400/15.75	100/3.94	40/1.57	16/0.63	20/0.79	90/3.54	81.000/18,200
III	M24	500/19.69	135/5.31	50/1.97	19/0.75	30/1.18	100/3.94	115.000/25,800
IV	M30	600/23.62	150/5.91	55/2.17	24/0.94	35/1.38	135/5.31	182.000/40,900
V	M36	800/31.50	180/7.09	65/2.56	29/1.14	40/1.57	150/5.91	265.000/59,500
	M42	1000/39.37	260/10.24	75/2.95	35/1.38	40/1.57	200/7.87	385.000/86,500
VI	More information on request.							

## we/2

**Two-Piece Through Type Anchor/Hold Down Stud** for the direct connection of the machine to the foundation.

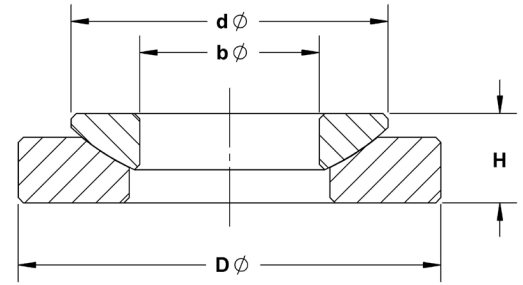
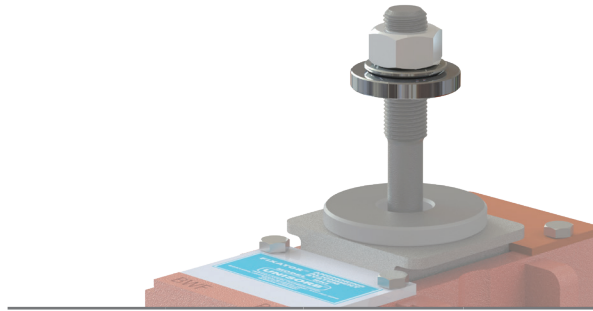
Note: Specify "f2" (Basic Model Option) and dimension "e" (thickness of machine foot) in your order. Model RKV Fixator will require a 47mm option "f".



**Option we/2 (mm/in)**

RK	M	L <sub>1</sub>	l <sub>1</sub>	dφ	Width a/f SW	Short we/2		'e'		Long we/2		'e"		Approx. Clamping Force N/lbs
						L	l	from	to	L	l	from	to	
I	M16	190/7.48	39/1.54	13/0.51	10mm	130/5.12	55/2.17	20/0.79	55/2.17	155/6.10	60/2.36	60/2.36	80/3.15	53.000/11,900
II	M20	275/10.83	48/1.89	16/0.63	13mm	140/5.51	50/1.97	20/0.79	50/1.97	190/7.48	80/3.15	55/2.17	100/3.94	81.000/18,200
III	M24	360/14.17	63/2.48	19/0.75	17mm	165/6.50	60/2.36	30/1.18	60/2.36	225/8.86	90/3.54	65/2.56	120/4.72	115.000/25,800
IV	M30	450/17.72	85/3.35	24/0.94	19mm	190/7.48	70/2.76	35/1.38	70/2.76	255/10.04	110/4.33	75/2.95	135/5.31	182.000/40,900
V	M36	600/23.62	105/4.13	29/1.14	24mm	220/8.66	80/3.15	40/1.57	80/3.15	275/10.83	120/4.72	85/3.35	135/5.31	265.000/59,500
VI	More information on request.													

**p**  
**Spherical Washer Set**  
 for non-parallel bearing  
 surfaces.

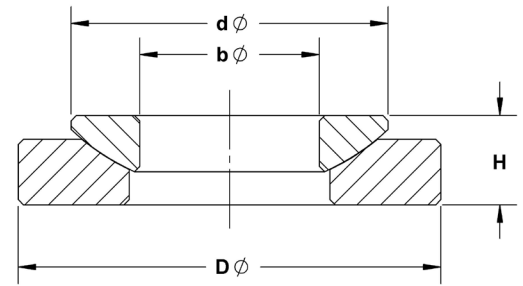
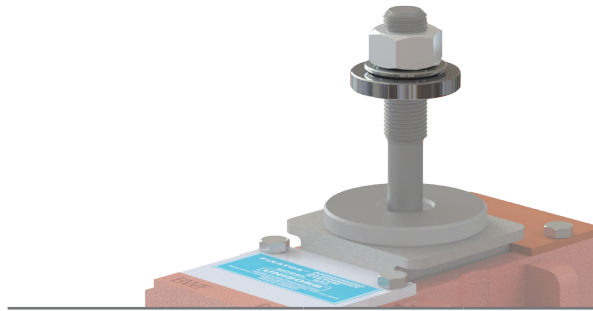


**Option p (mm/in)**

\* Max 3° angle correction.

RK	M	DØ	H	dØ	bØ
I	M12	40/1.57	9/0.35	30/1.18	13/0.51
	M16	40/1.57	9/0.35	30/1.18	17/0.67
II	M20	44/1.73	10/0.39	36/1.42	21/0.83
III	M24	56/2.20	13/0.51	44/1.73	25/0.98
IV	M30	68/2.68	16/0.63	56/2.20	31/1.22
	M36	78/3.07	20/0.79	68/2.68	37/1.46
V	M42	100/3.94	26/1.02	90/3.54	44/1.73

**r**  
**Oversized Spherical  
 Washer Set** for  
 non-parallel bearing  
 surfaces.

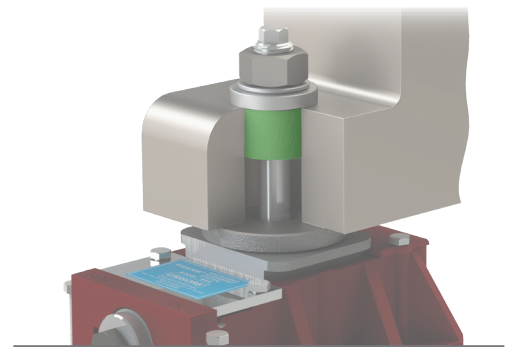
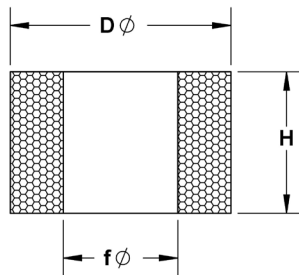


**Option r (mm/in)**

\* Max 3° angle correction.

RK	M	DØ	H	dØ	bØ
I	M16	44/1.73	10/0.39	36/1.42	17/0.67
II	M20	56/2.20	13/0.51	44/1.73	21/0.83
III	M24	68/2.68	16/0.63	56/2.20	25/0.98
IV	M30	80/3.15	16/0.63	56/2.20	31/1.22
	M36	100/3.94	20/0.79	68/2.68	37/1.46
V	M42	125/4.92	26/1.02	90/3.54	44/1.73

**Z**  
**Foam Centering Bushing**  
 for the concentric location  
 of the anchor bolts in the  
 machine foot holes.

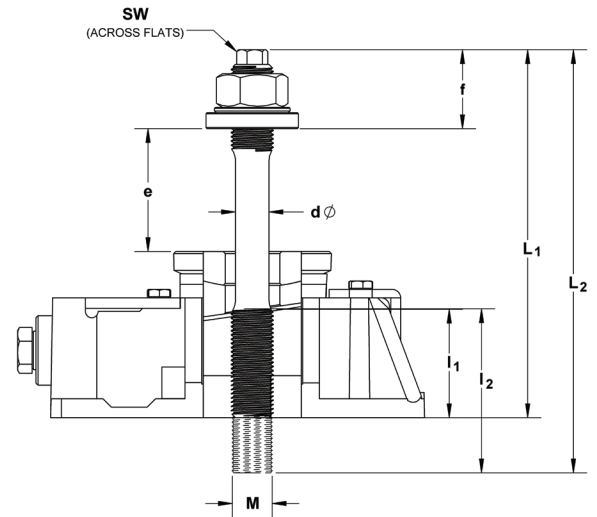
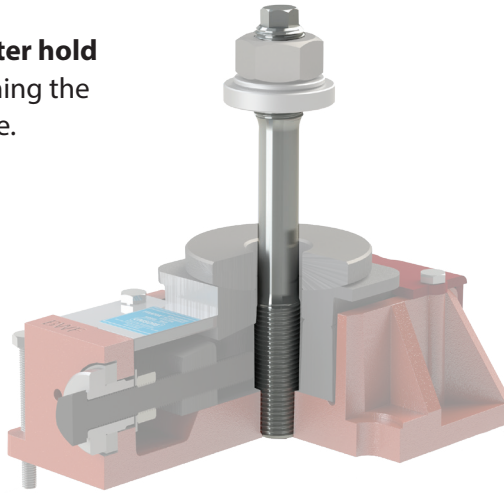


**Option z (mm/in)**

RK	FØ	DØ	H
I	15.7/0.62	31.8/1.25	25.4/1.00
II	20.6/0.81	39.6/1.56	25.4/1.00
III	24.4/0.96	44.5/1.75	25.4/1.00
IV	30.2/1.19	54.1/2.13	25.4/1.00
	36.6/1.44	60.5/2.38	25.4/1.00
V	42.9/1.69	69.9/2.75	25.4/1.00

## ste

**Normal or Long Center hold Down Stud** for attaching the Fixator to the machine.

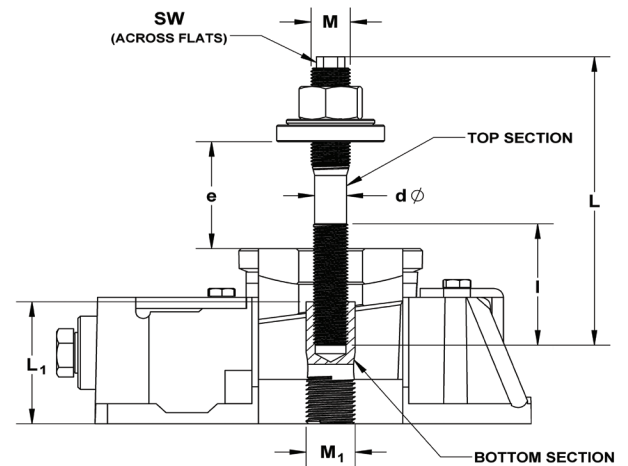
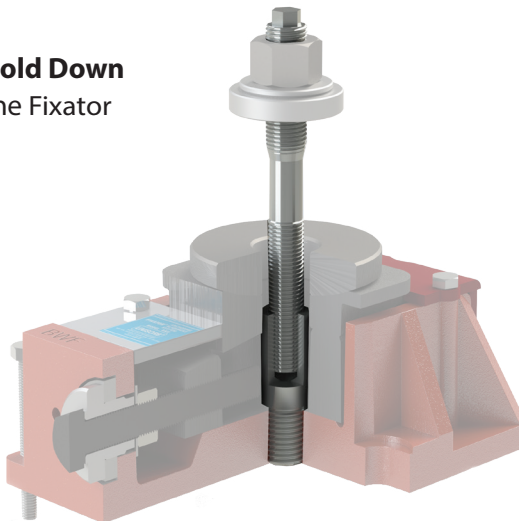


### Option ste (mm/in)

RK	M	dφ	Width a/f SW	f	Normal		'e'		Long		"e"		Approx. Clamping Force N/lbs
					L <sub>1</sub>	l <sub>1</sub>	from	to	L <sub>2</sub>	l <sub>2</sub>	from	to	
I	M12	--	--	--	130/5.12	--	20/0.79	40/1.57	160/6.30	--	40/1.57	70/2.76	32.000/7,100
II	M20	16/0.63	13mm	40/1.57	175/6.89	55/2.17	20/0.79	55/2.17	205/8.07	85/3.35	50/1.97	85/3.35	81.000/18,200
III	M24	19/0.75	17mm	50/1.97	215/8.46	70/2.76	20/0.79	70/2.76	260/10.24	115/4.53	65/2.56	115/4.53	115.000/25,800
IV	M30	24/0.94	19mm	55/2.17	260/10.24	85/3.35	30/1.18	85/3.35	310/12.20	135/5.31	80/3.15	135/5.31	182.000/40,900
V	M36	29/1.14	24mm	65/2.56	315/12.40	105/4.13	40/1.57	105/4.13	360/14.17	105/4.13	100/3.94	150/5.91	265.000/59,500
VI	More information on request.												

## ste/2

**Two-piece Center hold Down Stud** for attaching the Fixator to the machine.

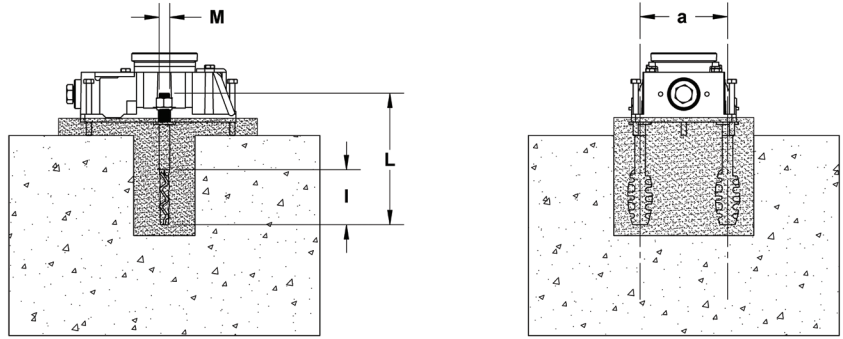
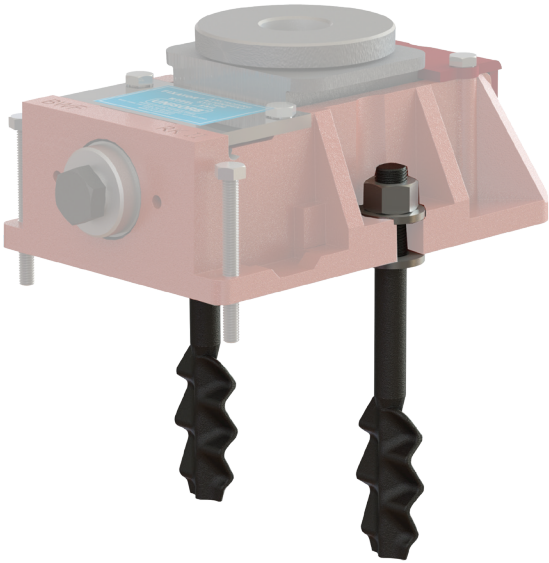


### Option ste/2 (mm/in)

RK	M	M <sub>1</sub>	dφ	Width a/f SW	Short ste/2		'e'		Long ste/2		"e"		L <sub>1</sub>	Approx. Clamping Force N/lbs
					L	l	from	to	L	l	from	to		
I	--	--	--	--	--	--	--	--	--	--	--	--	--	--
II	M16	M20	13/0.51	10mm	130/5.12	55/2.17	20/0.79	60/2.36	155/6.10	60/2.36	65/2.56	85/3.35	55/2.17	53.000/11,900
III	M20	M24	16/0.63	13mm	140/5.51	50/1.97	20/0.79	50/1.97	190/7.48	80/3.15	55/2.17	100/3.94	70/2.76	81.000/18,200
IV	M24	M30	19/0.75	17mm	165/6.50	60/2.36	30/1.18	60/2.36	225/8.86	90/3.54	65/2.56	120/4.72	85/3.35	115.000/25,800
V	M30	M36	24/0.94	19mm	190/7.48	70/2.76	40/1.57	70/2.76	255/10.04	110/4.33	75/2.95	135/5.31	105/4.13	182.000/40,900

**C**

**Side Anchor Bolts** for connecting Fixator to Foundations.

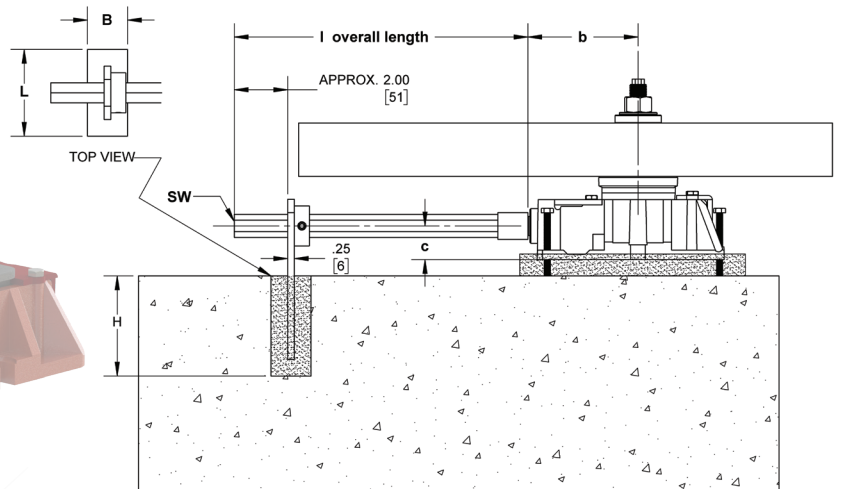
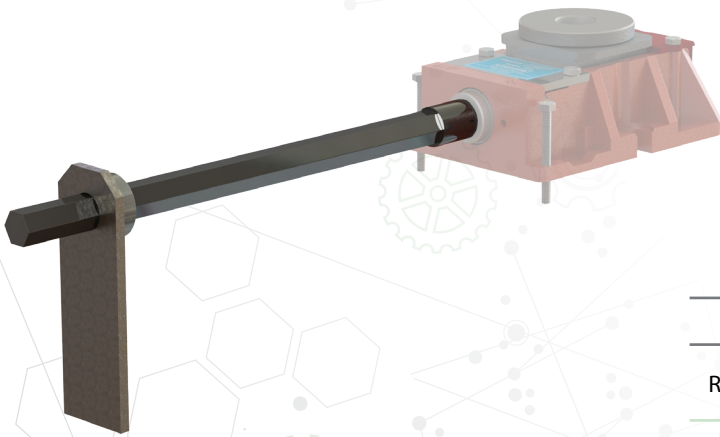


**Option c (mm/in)**

RK	M	L	I	a	Approx. Clamping Force N/lbs
I	M12	150/5.91	70/2.76	90/3.54	65.000/14,600
II	M12	150/5.91	70/2.76	100/3.94	65.000/14,600
III	M16	250/9.84	90/3.54	130/5.12	120.000/26,900
IV	M20	300/11.81	100/3.94	160/6.30	190.000/42,700
V	M24	350/13.78	135/5.31	205/8.07	275.000/61,800

**le**

**Adjustment Extension** for adjusting Fixators which are located in hard to reach places under machines.

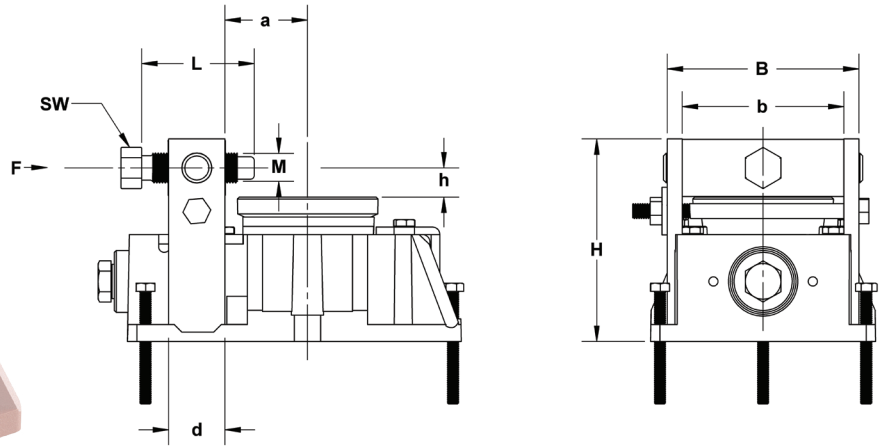
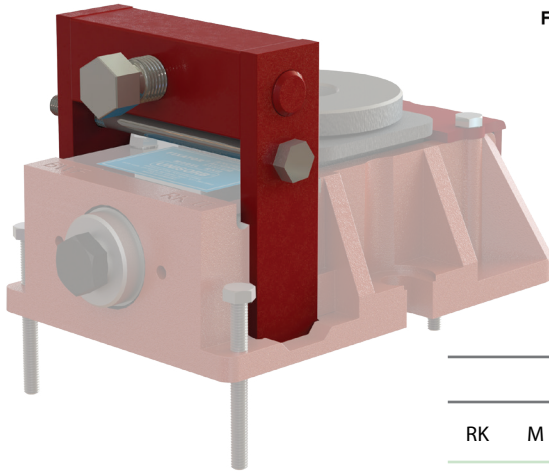


**Option le (mm/in)**

RK	b	c	I	Width a/f SW	Foundations		
					L	B	H
I	98/3.86	23/0.91	As Req'd	19.1/0.75	82.6/3.25	38.1/1.50	95.3/3.75
II	102/4.02	33/1.30	As Req'd	19.1/0.75	82.6/3.25	38.1/1.50	95.3/3.75
III	127/5.00	42/1.65	As Req'd	19.1/0.75	82.6/3.25	38.1/1.50	95.3/3.75
IV	152/5.98	51/2.01	As Req'd	19.1/0.75	82.6/3.25	38.1/1.50	95.3/3.75
V	192/7.56	60/2.36	As Req'd	19.1/0.75	82.6/3.25	38.1/1.50	95.3/3.75

### d

**Lateral Adjuster** for adjusting machine location. (The use of option c is recommended along with option d.)



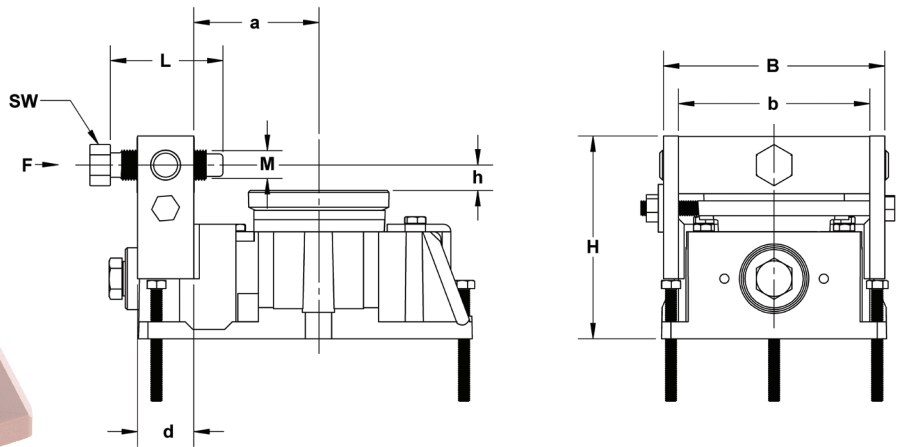
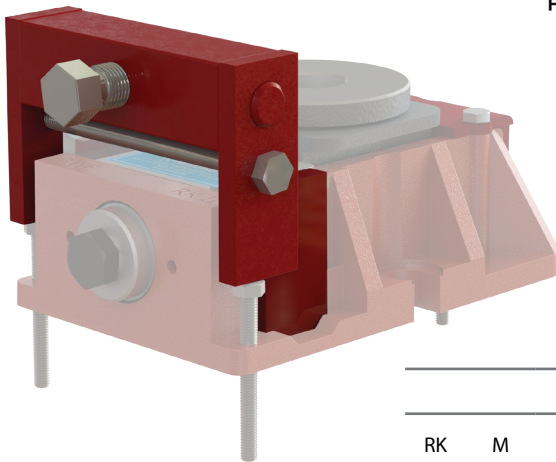
F → = Maximum Horizontal Force Available

#### Option d (mm/in)

RK	M	L	Width a/f SW	H	B	b	d	a	h	Nm/F → lbs.
I	M12	50/1.97	17mm	83/3.27	86/3.39	70/2.76	25/0.98	40/1.57	15/0.59	20.000/4,400
II	M16	60/2.36	19mm	106/4.17	102/4.02	86/3.39	30/1.18	43/1.69	16/0.63	25.000/5,600
III	M16	60/2.36	19mm	129/5.08	129/5.08	109/4.29	35/1.38	55/2.17	16/0.63	35.000/7,800
IV	M20	70/2.76	24mm	160/6.30	150/5.91	130/5.12	40/1.57	70/2.76	20/0.79	40.000/8,900
V	M24	80/3.15	30mm	192/7.56	199/7.83	175/6.89	45/1.77	90/3.54	24/0.94	60.000/13,400

### dz

**Offset Lateral Adjuster** for adjusting machine location. (The use of option c is recommended along with option d.)



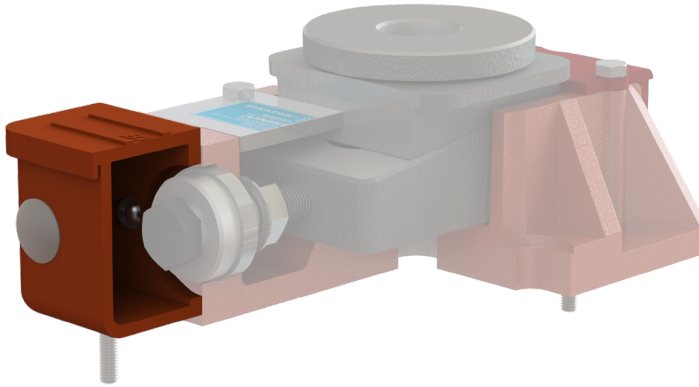
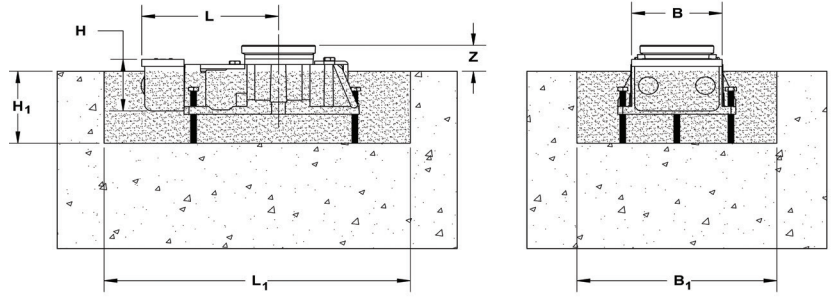
F → = Maximum Horizontal Force Available

#### Option dz (mm/in)

RK	M	L	Width a/f SW	H	B	b	d	a	h	N/F → lbs.
I	M12	50/1.97	17mm	83/3.27	102/4.02	86/3.39	25/0.98	57/2.24	15/0.59	20.000/4,400
II	M16	60/2.36	19mm	106/4.17	118/4.65	102/4.02	30/1.18	65/2.56	16/0.63	25.000/5,600
III	M16	60/2.36	19mm	129/5.08	149/5.87	129/5.08	35/1.38	80/3.15	16/0.63	35.000/7,800
IV	M20	70/2.76	24mm	160/6.30	170/6.69	150/5.91	40/1.57	100/3.94	20/0.79	40.000/8,900
V	M24	80/3.15	30mm	192/7.56	223/8.78	199/7.83	45/1.77	123/4.84	24/0.94	60.000/13,400

**m**

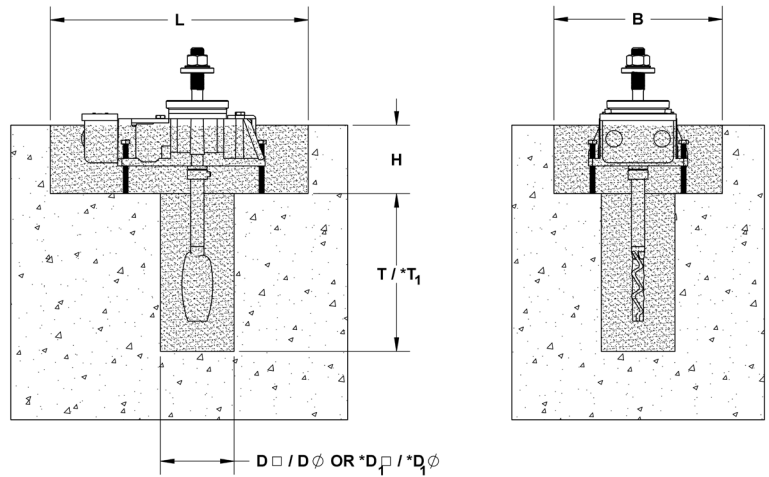
**Adjustment Bolt Enclosure** for use with recessed Fixators.



**Option m (mm/in)**

RK	L	B	H	Z	Foundations		
					L <sub>1</sub>	B <sub>1</sub>	H <sub>1</sub>
I	129/5.08	81/3.19	47/1.85	20/0.79	310/12.25	160/6.25	70/2.75
II	138/5.43	92/3.62	59/2.32	25/0.98	310/12.25	200/8.00	80/3.38
III	160/6.30	92/3.62	59/2.32	30/1.18	380/15.00	250/10.00	100/3.88
IV	206/8.11	136/5.35	96/3.78	35/1.38	450/17.75	300/12.00	120/4.50
V	245/9.65	136/5.35	96/3.78	40/1.57	550/21.50	330/13.00	140/5.13

Recesses in Foundations for Options m & wes combined.



\*Recess for larger anchor bolts

**Options m & wes Combined (mm/in)**

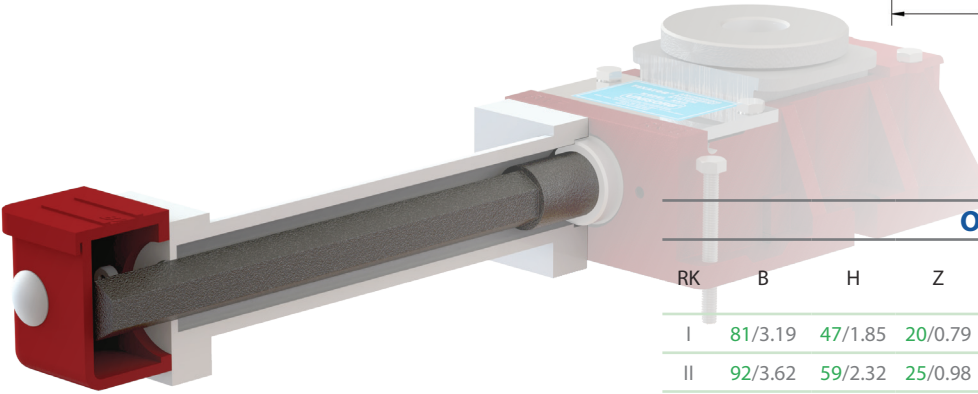
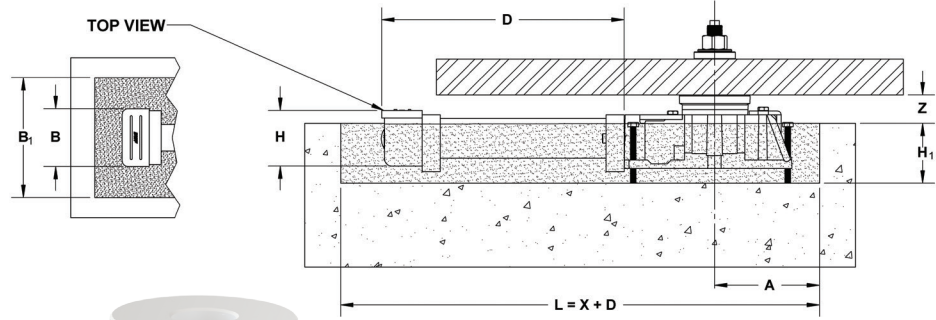
RK	L	B	H	D	T	*D <sub>1</sub>	*T <sub>1</sub>
I	310/12.25	160/6.25	70/2.75	70/3.00	230/9.00	--	--
II	310/12.25	200/8.00	80/3.38	80/3.50	270/10.50	100/4.00	360/14.25
III	380/15.00	250/10.00	100/3.88	100/4.00	340/13.50	120/5.00	430/17.00
IV	450/17.75	300/12.00	120/4.50	120/5.00	410/16.25	150/6.00	590/23.25
V	550/21.50	330/13.00	140/5.13	150/6.00	570/22.50	170/7.00	760/30.00

Note: Hole sizes based on using UNISORB V-1 Grout.

**les**

**Enclosed Adjustment Extension** for adjusting recessed Fixators which are located in hard to reach places under machines.

Note: Opt. m to be ordered separately.



**Option les (mm/in)**

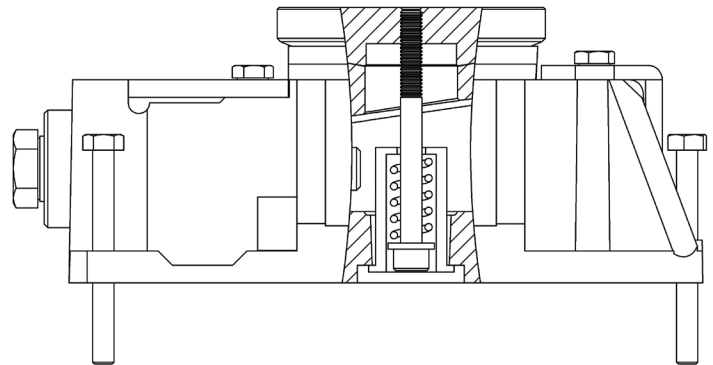
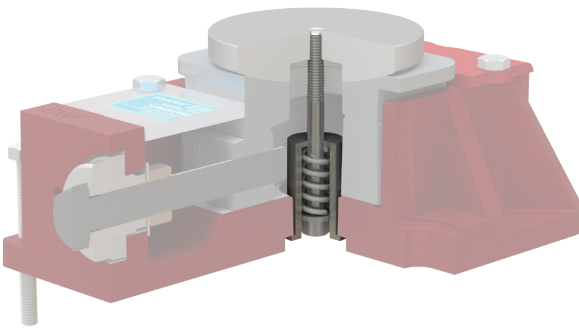
RK	B	H	Z	Min. Dim.		Foundations		
				D	A	B <sub>1</sub>	H <sub>1</sub>	X
I	81/3.19	47/1.85	20/0.79	As Req'd	130/5.12	160/6.25	70/2.75	265/10.5
II	92/3.62	59/2.32	25/0.98	As Req'd	140/5.51	200/8.00	80/3.38	280/11.0
III	92/3.62	59/2.32	30/1.18	As Req'd	160/6.30	250/10.00	100/3.88	320/12.5
IV	136/5.35	96/3.78	35/1.38	As Req'd	200/7.87	300/12.00	120/4.50	380/15.0
V	136/5.35	96/3.78	40/1.57	As Req'd	230/9.06	330/13.00	140/5.13	445/17.5

Note: Hole sizes based on using UNISORB V-1 Grout.

**mon**

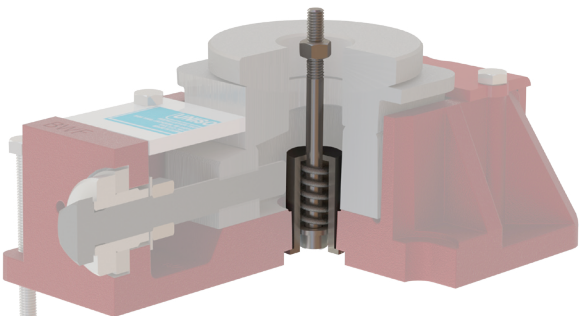
**Locking System** for the top spherical washer.

Note: Requires Opt. f and counterbore.



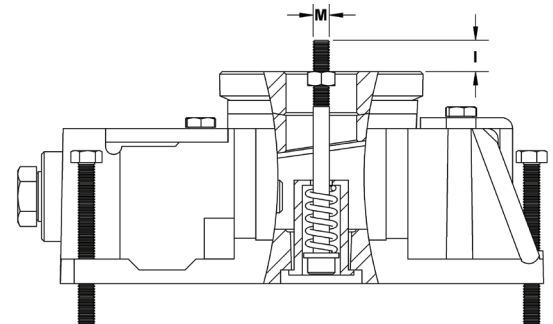
**frot**

**Connection** for mobile application.



**Option frot (mm/in)**

RK	M	I
I	M6	8/0.31
II	M6	8/0.31
III	M8	8/0.31
IV	M8	12/0.47
V	M12	12/0.47



# RK Fixator Installation Instructions

## Overview

The machine to be installed is moved to its approximate position, supported with temporary blocks, and the Fixators with their options are prehung from the machine base. The machine base is then moved into final position on the foundation. The Fixator with their anchors suspended from the base are positioned and lowered into previously prepared grout cavities. The machine is rough aligned and permanently grouted into place. When the grout has cured sufficiently, the temporary blocks are removed. The anchor bolts are tightened, and the machine is then precisely leveled and aligned with the Fixator adjusting wedges. This approach eliminates the need for precise presetting of the mounts and results in substantial time savings.

## Step-By-Step

- 1 FOUNDATION PREPARATION** — Prepare the foundation in accordance with accepted civil engineering practices. Grout cavities for the Fixator base and anchor bolts may be provided by pre-casting them or by core drilling after pouring concrete. The best core drilling results can be obtained while the foundation is green (approximately 48 hours). Anchor bolt holes shall be in accordance with UNISORB Drawing No. 469900-02. Grout cavities for recessed Fixator mounting shall be in accordance with UNISORB Drawing No. 469900-07.
- 2 POSITION MACHINE** — When the concrete is cured sufficiently to support machine loads, prepare the machine for installation in accordance with the manufacturer's instructions and move into position on the foundation. The machine is supported temporarily on blocks with the anchor holes over the previously prepared grout cavities. *Note: Temporary blocks should be high enough to permit assembly of Fixator units to the machine base.*
- 3 ATTACH FIXATORS®** — Turn the Fixator alignment and leveling adjustment screw fully counterclockwise to assure that the full travel of the wedge will be available during the alignment phase. Assemble the Fixator with the anchor bolt and spherical washer set to the machine base. (Refer to the installation drawing included in this manual for proper assembly.) Position the "O" ring and set collar provided with the anchor bolt against the bottom of the Fixator, securing it with the set screw provided. The anchor nut should be positioned so that three threads are exposed and only tightened sufficiently to hold the Fixator unit in contact with the machine base.



**4 LOWER MACHINE** — Lower the machine into final position, again supported by temporary blocks with the Fixator projected into the grout cavities. The machine should now be rough aligned to a value of plus or minus 1/16" (1.6mm). *Note: Minimum clearance between the Fixator® base and the foundation for grout placement must be 1/2" (12mm) for UNISORB Standard V-100 Epoxy Grout formula and 1-1/2" (38mm) for UNISORB V-1 cementitious grout. The three small presetting screws in the Fixator® base flange may be used to level the Fixator to the foundation, if desired. Do not attempt to support the machine weight with these three screws.*

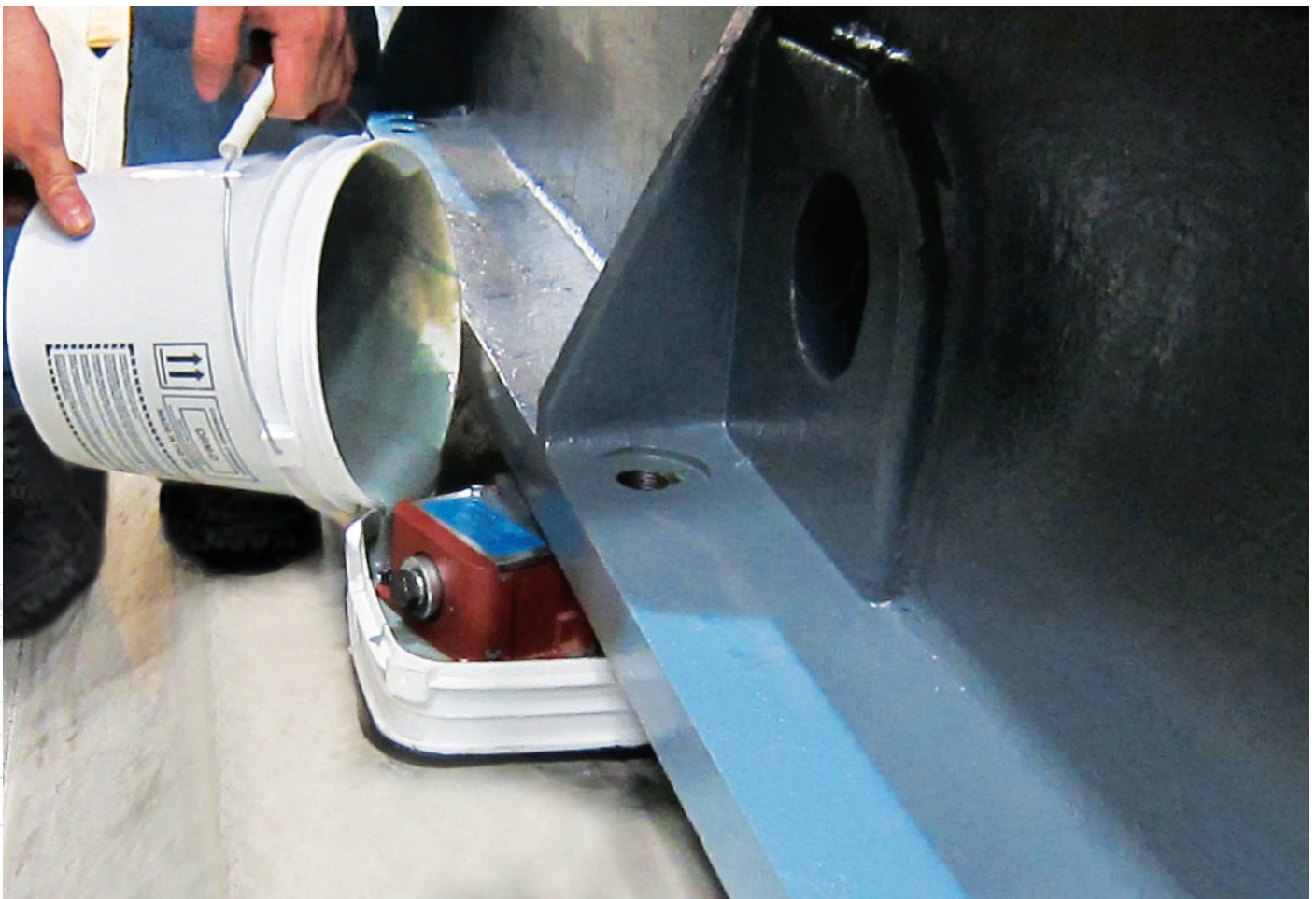
**5 PREPARE GROUT FORMS** (If applicable) — Apply butyl tape around the bottom flange of grout form. Leave release paper on. Clean the floor thoroughly with oil free compressed air. Remove paper from butyl tape and press form securely to the floor for about 30 seconds to create a secure seal.





**6 POUR GROUT** — Prepare and pour UNISORB Grout in accordance with grouting instructions provided with the material. Pour grout to cover Fixator base flange as shown on UNISORB Drawing No. 469900-02 for surface mounting or UNISORB Drawing No. 469900-07 for recessed mounting. Grout forms used for surface mounting may be removed after grout has set.

**7 ADJUST FIXATORS®** — After grout cures and with anchor nuts loose, remove the temporary blocks. Snug anchor nuts with a small hand wrench and turn each adjusting screw two full turns. This action applies final tension to the anchor bolts and prepares the machine and the foundation. When raising the machine, adjust all Fixators in sequence, starting at one end or the middle and working toward each end. Do not skip any units.

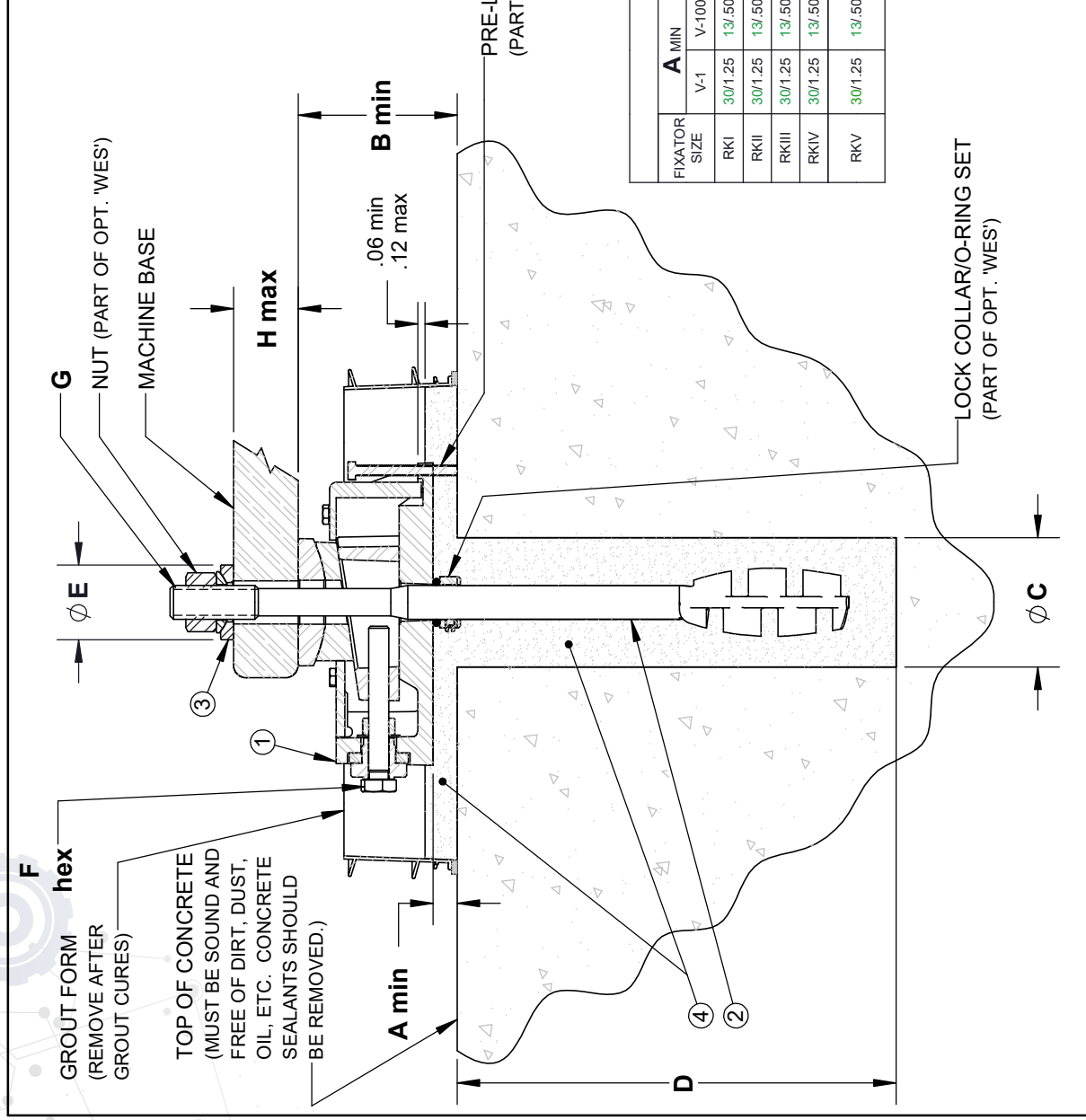


**8 FINAL MACHINE ALIGNMENT** — Any reliable alignment measuring system may be used. We suggest however that optical or electronic systems are far superior to bubble-level technology in that they respond much faster, thus allowing installers to take full advantage of the quick installation characteristics offered by the Fixator system. Align the machine by locating the high spot and raising the remainder of the machine to match. The anchor nuts will remain tightened during this operation. If it becomes necessary to lower an individual Fixator during final alignment do not exceed one full turn. If more than one turn is required the unit should be backed off until the anchor nut loosens; the nut is re-snugged, and the unit is raised to the desired adjustment. This is necessary to assure that the minimum anchor bolt tension is achieved. When final level and alignment is achieved, the machine may be placed into operation. *Note: The base may be realigned at any time, if required. Simply adjust the Fixator units, again raising the low points. The anchor nuts need not be loosened to accomplish the realignment.*



### BILL OF MATERIALS


ITEM	QTY	DESCRIPTION
1	1	FIXATOR BASIC UNIT WITH OPTION 'F'
2	1	OPTION 'WES' ANCHOR/HOLD DOWN STUD
3	1	OPTION 'P' SPHERICAL WASHER SET
4	A/R	OPTION 'R' OVERSIZE SPHERICAL WASHER SET V-1 NON-SHRINK GROUT STANDARD V-100 EPOXY GROUT



DIMENSION TABLE (MM/IN.)

FIXATOR SIZE	A MIN		B MIN		C		D		E		F hex	G	H MAX
	V-1	V-100	V-1	V-100	V-1	V-100	V-1	V-100	OPT. 'P'	OPT. 'R'			
RKI	30/1.25	13/50	87/3.50	70/2.76	70/3.00	50/2.00	230/9.00	40/1.57	44/1.73	19/75	16MM	60/2.36	
RKII	30/1.25	13/50	107/4.29	90/3.54	80/3.50	60/2.50	270/10.50	44/1.73	56/2.20	19/75	20MM	90/3.54	
RKIII	30/1.25	13/50	127/5.08	110/4.33	100/4.00	70/3.00	340/13.50	56/2.20	68/2.68	24/94	24MM	100/3.94	
RKIV	30/1.25	13/50	147/5.87	130/5.12	120/5.00	80/3.50	410/16.25	68/2.68	80/3.15	30/1.18	30MM	135/5.31	
RKV	30/1.25	13/50	167/6.65	150/5.91	150/6.00	100/4.00	570/22.50	78/3.07	100/3.94	36/1.42	36MM	150/5.91	
					170/7.00	110/4.50	760/30.00	125/4.92			42MM	200/7.87	

REV.	DESCRIPTION	BY	DATE	CHK'D	DATE
D	ADDED METRIC VALUES TO TABLE	DLS	12/10/2025	DLC	12/10/2025
C	REVISED B DIMENSIONS	WLL	4/30/2019	DLS	4/30/2019



**UNISORB**  
INSTALLATION SOLUTIONS

4117 FELTERS ROAD  
MICHIGAN CENTER, MI 49254  
517-764-6060 FAX: 517-764-5607 www.unisorb.com

TITLE: STANDARD INSTALLATION DRAWING

CUSTOMER / PROJECT: -

MACHINE: RK FIXATOR WITH OPTION 'WES'

MATERIAL: -

DRWN BY: WLL DATE: 2-23-18

CHK'D BY: DLS DATE: 2-23-18

DWG. NO. **46990-02**

SHEET REV 1 OF 1 **D**

DO NOT SCALE DRAWING

SCALE: NONE

PROPOSAL NO. \_\_\_\_\_

-	PRELIMINARY DRAWING
-	FINAL DRAWING
x	CONCEPTUAL

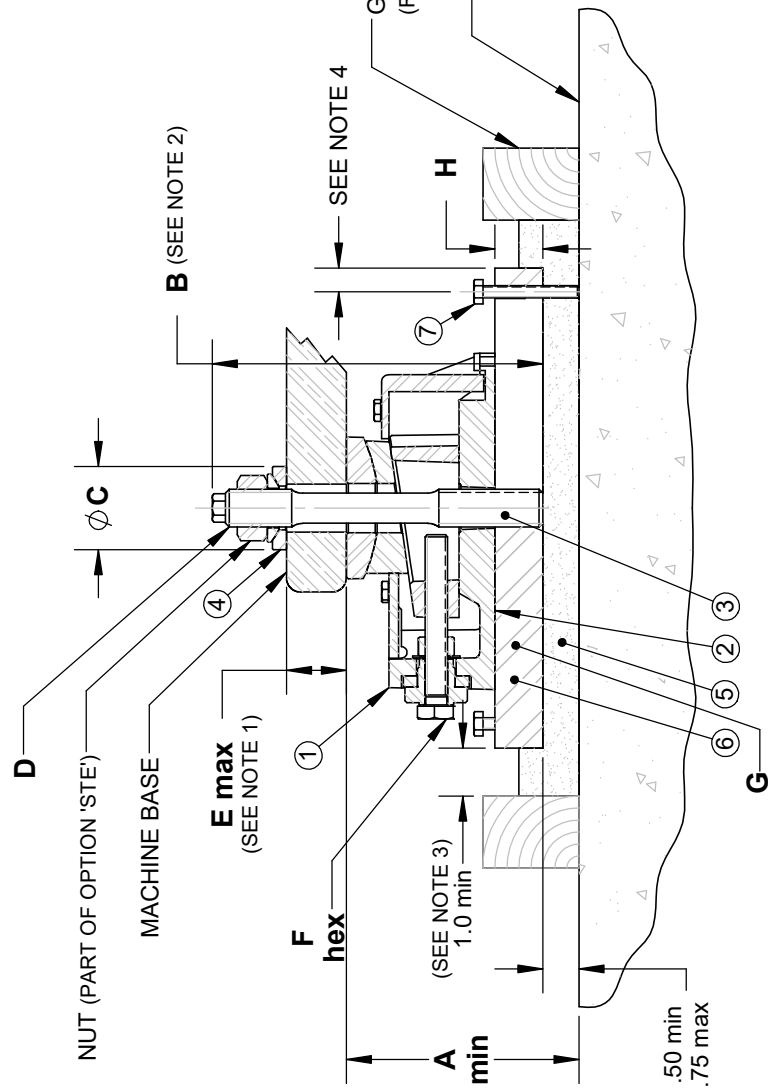
**PROPRIETARY AND CONFIDENTIAL**  
PROPERTY OF UNISORB INSTALLATION TECHNOLOGIES. REPRODUCTION OF THIS DRAWING FOR PURPOSES OTHER THAN INSTALLATION OR EXPRESS PERMISSION OF UNISORB INSTALLATION TECHNOLOGIES. THIS DRAWING IS NOT TO BE REPRODUCED, USED FOR FABRICATION OR DISCLOSED TO THIRD PARTIES WITHOUT THE WRITTEN CONSENT FROM UNISORB INSTALLATION TECHNOLOGIES.

SCALE: \_\_\_\_\_

DOCUMENT IS ELECTRONICALLY CONTROLLED. VERIFY REV PRIOR TO USE.

# BILL OF MATERIALS

ITEM	QTY	DESCRIPTION
1	1	FIXATOR BASIC UNIT WITH OPTION 'F'
2	1	OPTION 'B' MACHINE BASE
3	1	OPTION 'STE' HOLD DOWN STUD
4	1	OPTION 'R' SPHERICAL WASHER SET
5	A/R	OPTION 'R' OVERSIZE SPHERICAL WASHER SET STANDARD V-100 EPOXY GROUT
6	1	STEEL PLATE, (SEE 'G' & 'H' DIMS). SUPPLIED BY UNISORB OR CUSTOMER
7	3	OPTIONAL LEVELING BOLT, VARIABLE SIZE, SUPPLIED BY UNISORB OR CUSTOMER



GROUT FORM BY CUSTOMER  
(REMOVE AFTER GROUT CURES)

TOP OF CONCRETE (MUST BE SOUND AND FREE OF DIRT, DUST, OIL, ETC. CONCRETE SEALANTS SHOULD BE REMOVED.)

DIMENSION TABLE (MM/IN.)

FIXATOR SIZE	A MIN	B	C		D	E MAX	F hex	G PLATE SIZE	H
			OPT. 'P'	OPT. 'R'					
RKI	93/3.68	170/6.69	40/1.57	44/1.73	16MM	55/2.17	19/1.75	152 x 229 / 6 x 9	251/1.00
RKII	113/4.46	175/6.89	44/1.73	56/2.20	20MM	30/1.18	19/1.75	178 x 254 / 7 x 10	251/1.00
RKIII	133/5.25	215/8.46	56/2.20	68/2.68	24MM	45/1.77	24/94	203 x 305 / 8 x 12	251/1.00
RKIV	160/6.29	260/10.24	68/2.68	80/3.15	30MM	53/2.09	30/1.18	254 x 381 / 10 x 15	321/1.25
RKV	186/7.33	315/12.40	78/3.07	100/3.94	36MM	67/2.64	36/1.42	381 x 508 / 15 x 20	381/1.50

- NOTES:
- DIM SHOWN IS FOR STANDARD LENGTH OPT. 'STE'. LONGER STUDS ARE AVAILABLE FOR SPECIAL APPLICATIONS WHERE MACHINE FOOT THICKNESS DICTATES.
  - DIM SHOWN IS WHEN USING STANDARD LENGTH OPT. 'STE'.
  - 1" MIN. OUTSIDE OF STEEL PLATE ON 3 SIDES, AND 3" MIN. OUTSIDE OF STEEL PLATE ON GROUT POUR SIDE. SEE UNISORB DRAWING 469900-03A FOR DIMENSIONAL LAYOUT OF STEEL PLATES.

REV.	DESCRIPTION	BY	DATE	CHK'D	DATE
C	ADDED METRIC VALUES TO TABLE	DLS	12/10/2025	DLC	12/10/2025
B	REVISED 'E' AND 'A' DIMS	WLL	4/30/2019	DLS	4/30/19



4117 FELTERS ROAD  
MICHIGAN CENTER, MI 49254  
517-764-6060 FAX: 517-764-5607 www.unisorb.com

TITLE: STANDARD INSTALLATION DRAWING

CUSTOMER / PROJECT: -

MACHINE: RK FIXATOR WITH OPTION 'STE' ON STEEL PLATE

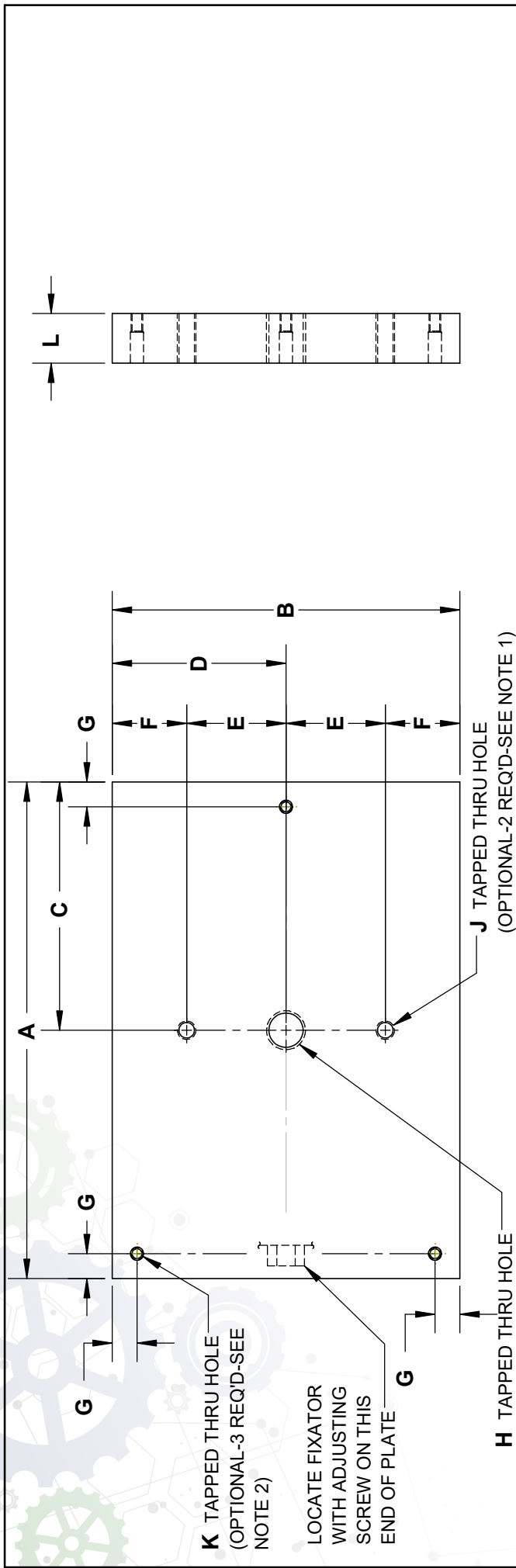
MATERIAL: - DWG. NO. 469900-03

DRWN BY: WLL DATE: 2-27-18

CHK'D BY: DLS DATE: 2-27-18

DO NOT SCALE DRAWING SCALE: NONE

DOCUMENT IS ELECTRONICALLY CONTROLLED. VERIFY REV PRIOR TO USE.



**DIMENSION TABLE (MM/IN.)**

FIXATOR SIZE	A	B	C	D	E	F	G	H	J	K	L
RK I	229/9.00	152/6.00	114/4.50	76/3.00	45/1.77	30/1.19	13/0.50	M16-2.0	3/8-16	M6-1.0 6H THROUGH ALL C'BORE 17/64"Ø √ 5/8"	25/1.00
RK II	254/10.00	178/7.00	127/5.00	89/3.50	50/1.97	38/1.50	13/0.50	M20-2.5	3/8-16	M6-1.0 6H THROUGH ALL C'BORE 17/64"Ø √ 5/8"	25/1.00
RK III	305/12.00	203/8.00	152/6.00	102/4.00	65/2.56	35/1.38	13/0.50	M24-3.0	1/2-13	M6-1.0 6H THROUGH ALL C'BORE 17/64"Ø √ 5/8"	25/1.00
RK IV	381/15.00	254/10.00	191/7.50	127/5.00	80/3.15	46/1.82	13/0.50	M30-3.5	3/4-10	M8-1.25 6H THROUGH ALL C'BORE 11/32"Ø √ 5/8"	32/1.25
RK V	508/20.00	381/15.00	254/10.00	191/7.50	103/4.04	88/3.46	19/0.75	M36-4.0	1-8	M8-1.25 6H THROUGH ALL C'BORE 11/32"Ø √ 5/8"	38/1.50

**BOLTS FOR TAPPED HOLES**

FIXATOR SIZE	J (2) BOLTS	K (3) BOLTS
RK I	3/8-16 x 1.50 HEX HEAD WITH FLAT WASHER	M6-1.0 X 100 HEX HEAD
RK II	3/8-16 x 1.50 HEX HEAD WITH FLAT WASHER	M6-1.0 X 100 HEX HEAD
RK III	1/2-13 x 1.75 HEX HEAD WITH FLAT WASHER	M6-1.0 X 100 HEX HEAD
RK IV	3/4-10 x 2.25 HEX HEAD WITH FLAT WASHER	M8-1.25 X 100 HEX HEAD
RK V	1-8 x 2.25 HEX HEAD WITH FLAT WASHER	M8-1.25 X 100 HEX HEAD

C	ADDED METRIC VALUES TO TABLE	DLS	12/10/2025	DLC	12/10/2025
B	CORRECTED REFERENCES FOR H AND K HOLES. ADDED NOTE.	DT	3-16-2020	DLC	5-22-2023
A	DRAWING CONVERTED TO SW. OTHER VERSIONS OBSOLETE	WLL	2-28-18	DLS	2-28-18
REV.	DESCRIPTION	BY	DATE	CHK'D	DATE

**UNISORB**  
INSTALLATION SOLUTIONS

**4117 FELTERS RD., MICHIGAN CENTER, MI 49254**  
517-764-6060 FAX: 517-764-5607  
www.unisorb.com

TITLE: DIMENSIONAL LAYOUT

CUSTOMER / PROJECT: -

MACHINE: STEEL PLATE FOR FIXATOR WITH OPTION 'STE'

MATERIAL: -

DRWN BY: WLL DATE: 2-28-18

CHK'D BY: DLS DATE: 2-28-18

DWG. NO. **469900-03A**

SHT REV 1/1 **C**

**DOCUMENT IS ELECTRONICALLY CONTROLLED. VERIFY REV PRIOR TO USE.**

SCALE	SCALE
DO NOT SCALE DRAWING	NONE

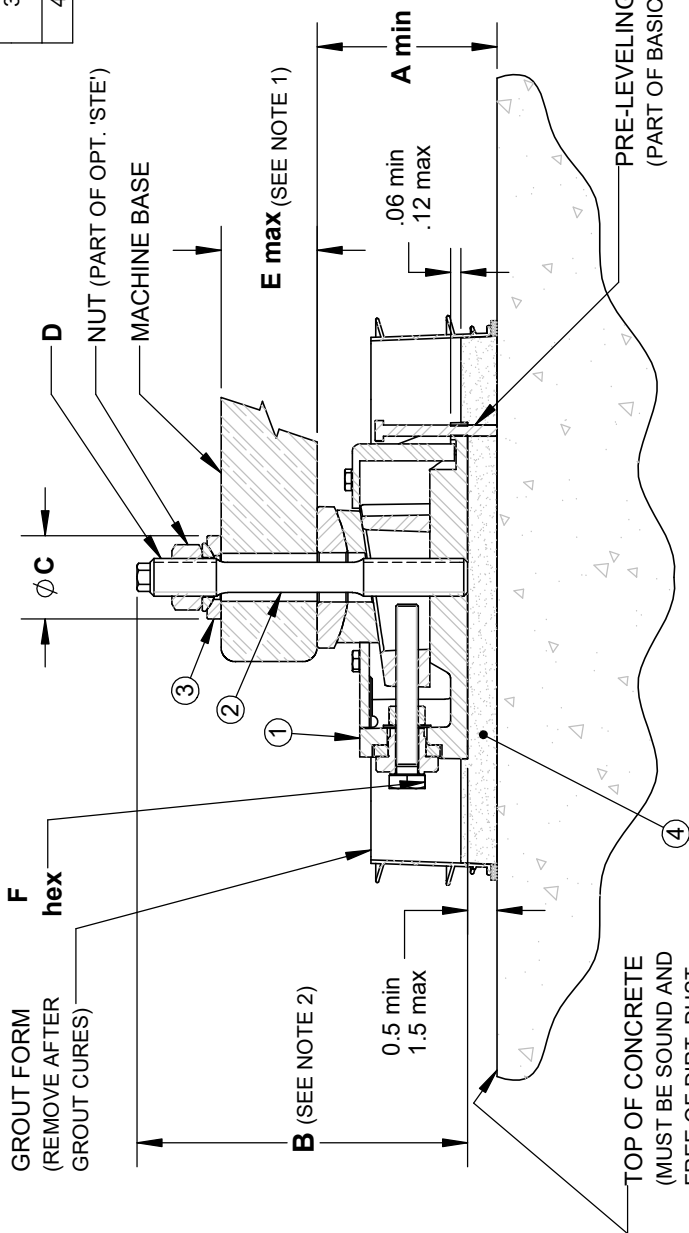
PRELIMINARY DRAWING  
FINAL DRAWING  
CONCEPTUAL

**PROPRIETARY AND CONFIDENTIAL**  
PROPERTY OF UNISORB INSTALLATION TECHNOLOGIES. REPRODUCTION OF THIS DRAWING OR ANY PARTS THEREOF FOR ANY PURPOSES OTHER THAN INSTALLATION AND MAINTENANCE REQUIRES THE EXPRESS PERMISSION OF UNISORB INSTALLATION TECHNOLOGIES. THIS DRAWING IS NOT TO BE REPRODUCED, COPIED, OR TRANSMITTED IN ANY FORM OR BY ANY MEANS, WITHOUT PRIOR WRITTEN CONSENT FROM UNISORB INSTALLATION TECHNOLOGIES.

- NOTES:**
- TAPPED HOLES **J** WILL ONLY BE REQ'D WHEN OPTION 'D' LATERAL STABILIZER IS USED.
  - TAPPED HOLES **K** WILL ONLY BE REQ'D IF CUSTOMER IS GOING TO USE PRE-LEVELING BOLTS.
  - FOR FIXATOR INSTALLATION DRAWING, UTILIZING STEEL PLATES, SEE UNISORB DRAWING 469900-03. SEE TECHNICAL BULLETIN LB-0155-2 FOR PRODUCT CODE AND SPECIFICATION INFORMATION.

# BILL OF MATERIALS

ITEM	QTY	DESCRIPTION
1	1	FIXATOR BASIC UNIT
2	1	OPTION 'STE' HOLD DOWN STUD
3	1	OPTION 'P' SPHERICAL WASHER SET
4	A/R	OPTION 'R' OVERSIZE SPHERICAL WASHER SET STANDARD V-100 EPOXY GROUT



DIMENSION TABLE (MM/IN.)

FIXATOR SIZE	A MIN	B	C		D	E MAX	F HEX
			OPT. 'P'	OPT. 'R'			
RK I	90/3.54	175/6.89	44/1.73	56/2.20	20MM	55/2.17	19/0.75
RK II	110/4.33	215/8.46	56/2.20	68/2.68	24MM	70/2.76	24/0.94
RK IV	130/5.12	260/10.24	68/2.68	80/3.15	30MM	85/3.35	30/1.18
RK V	150/5.91	315/12.40	78/3.07	100/3.94	36MM	105/4.13	36/1.42

REV.	DESCRIPTION	BY	DATE	CHKD	DATE
C	ADDED METRIC VALUES TO TABLE	DLS	12/10/2025	DLC	12/10/2025
B	REVISED DIMENSION A	WLL	4/30/2019	DLS	4/30/2019



INSTALLATION SOLUTIONS

4117 FELTERS ROAD  
MICHIGAN CENTER, MI 49254  
517-764-6060 FAX: 517-764-5607  
www.unisorb.com

TITLE: STANDARD INSTALLATION DRAWING

CUSTOMER / PROJECT: -

MACHINE: RK FIXATOR WITH OPTION 'STE'

MATERIAL: -

DRWN BY: WLL | DATE: 3-1-18

CHKD BY: DLS | DATE: 3-1-18

DWG. NO.

**469900-04**

SHT

1/1

DO NOT SCALE DRAWING  
SCALE: NONE

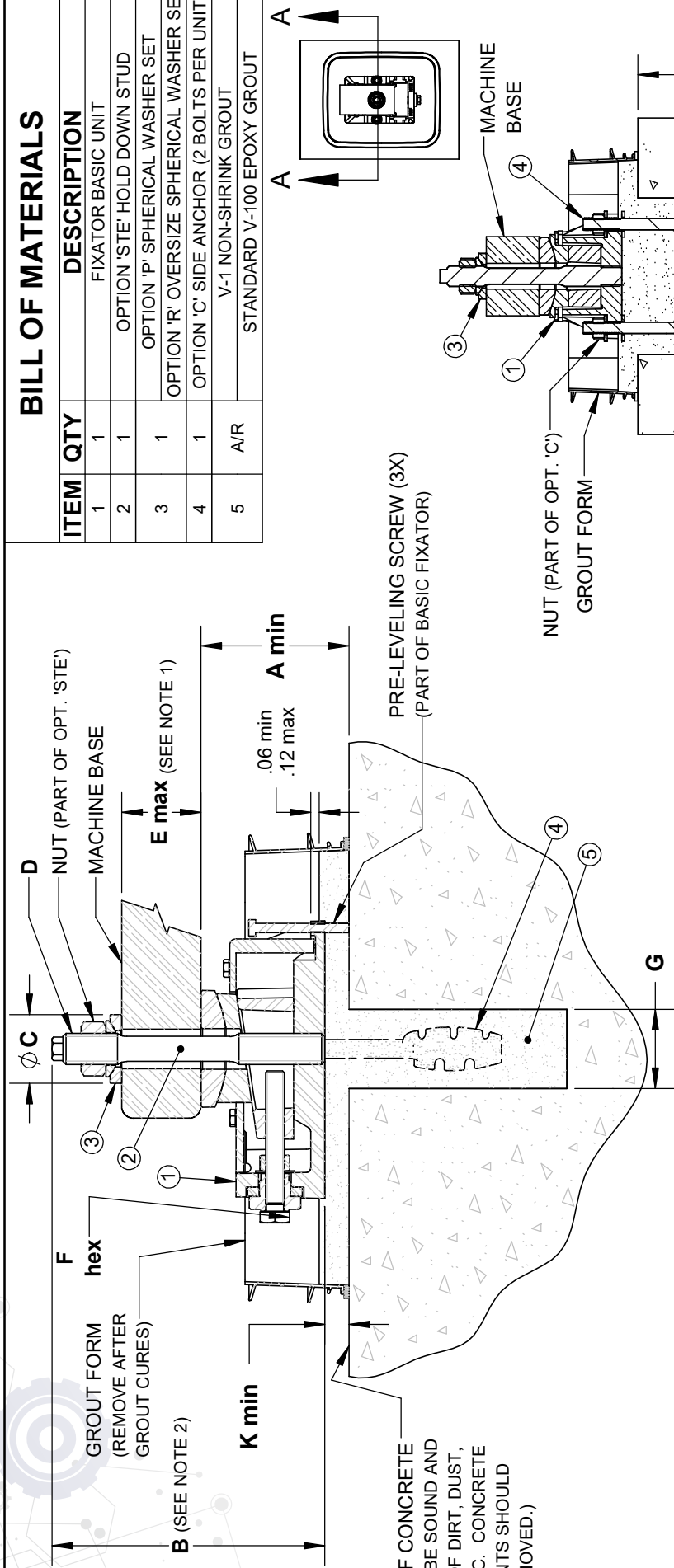
DOCUMENT IS ELECTRONICALLY CONTROLLED. VERIFY REV PRIOR TO USE.

NOTES:

- DIMENSION SHOWN IS FOR STANDARD LENGTH OPTION 'STE'. LONGER STUDS ARE AVAILABLE FOR SPECIAL APPLICATIONS WHERE MACHINE FOOT THICKNESS DICTATES.
- DIMENSION SHOWN IS WHEN USING STANDARD LENGTH OPTION 'STE'.

# BILL OF MATERIALS

ITEM	QTY	DESCRIPTION
1	1	FIXATOR BASIC UNIT
2	1	OPTION 'STE' HOLD DOWN STUD
3	1	OPTION 'P' SPHERICAL WASHER SET
4	1	OPTION 'R' OVERSIZE SPHERICAL WASHER SET
5	1	OPTION 'C' SIDE ANCHOR (2 BOLTS PER UNIT)
		V-1 NON-SHRINK GROUT
		STANDARD V-100 EPOXY GROUT



DIMENSION TABLE (MM/IN.)

FIXATOR SIZE	A MIN		B	C		D	E MAX	F HEX	G	H		J	K MIN	
	V-1	V-100		OPT. 'P'	OPT. 'R'					V-1	V-100		V-1	V-100
RK I														
RK II	107/4.29	90/3.54	175/6.89	44/1.73	56/2.20	20MM	55/2.17	19/1.75	60/2.50	45/1.75	160/6.25	140/5.50	30/1.25	13/1.50
RK III	127/5.08	110/4.33	215/8.46	56/2.20	68/2.68	24MM	70/2.76	24/1.94	70/2.75	50/2.00	200/8.00	185/7.25	30/1.25	13/1.50
RK IV	147/5.87	130/5.12	260/10.24	68/2.68	80/3.15	30MM	85/3.35	30/1.18	80/3.25	60/2.50	240/9.50	230/9.00	30/1.25	13/1.50
RK V	167/6.65	150/5.91	315/12.40	78/3.07	100/3.94	36MM	105/4.13	36/1.42	100/4.00	90/3.50	305/12.00	270/10.50	30/1.25	13/1.50

C	ADDED METRIC VALUES TO TABLE	DLS	12/10/2025	DLC	12/10/2025
B	REVISED DIMENSION A	WLL	5/2/2019	DLS	5/2/2019
REV.	DESCRIPTION	BY	DATE	CHKD	DATE



UNLESS OTHERWISE SPECIFIED:  
 ALL SHARP CORNERS TO BE BROKEN.  
 ALL SURFS TO BE REMOVED.  
 DIMENSIONS ARE TO UNLESS OTHERWISE SPECIFIED.  
 SURFACE FINISH 250

PROPERTY OF UNISORB INSTALLATION TECHNOLOGIES. REPRODUCTION OF THIS DRAWING FOR ANY OTHER THAN UNISORB OR OTHER THAN UNISORB MAINTENANCE REQUIRES THE EXPRESS PERMISSION OF UNISORB INSTALLATION TECHNOLOGIES. THIS DRAWING IS NOT TO BE REPRODUCED, COPIED, OR TRANSMITTED IN ANY FORM OR BY ANY MEANS WITHOUT PRIOR WRITTEN CONSENT FROM UNISORB INSTALLATION TECHNOLOGIES.

LIMIT ON DIMENSIONS	
INCHES	METRIC
1 PLACE	±0.2
2 PLACE	±0.3
3 PLACE	±0.5
FRACTIONAL	±.18"

NOTES:  
 1. DIMENSION SHOWN IS FOR STANDARD LENGTH OPTION 'STE'. LONGER STUDS ARE AVAILABLE FOR SPECIAL APPLICATIONS WHERE MACHINE FOOT THICKNESS DICTATES.  
 2. DIMENSION SHOWN IS WHEN USING STANDARD LENGTH OPTION 'STE'.

4117 FELTERS ROAD  
 MICHIGAN CENTER, MI 49254  
 517-764-6060 FAX: 517-764-5607  
 www.unisorb.com

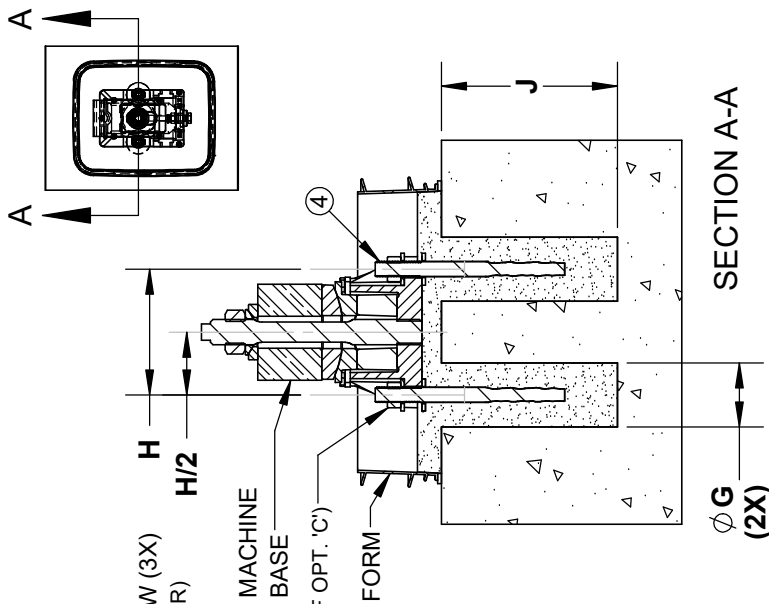
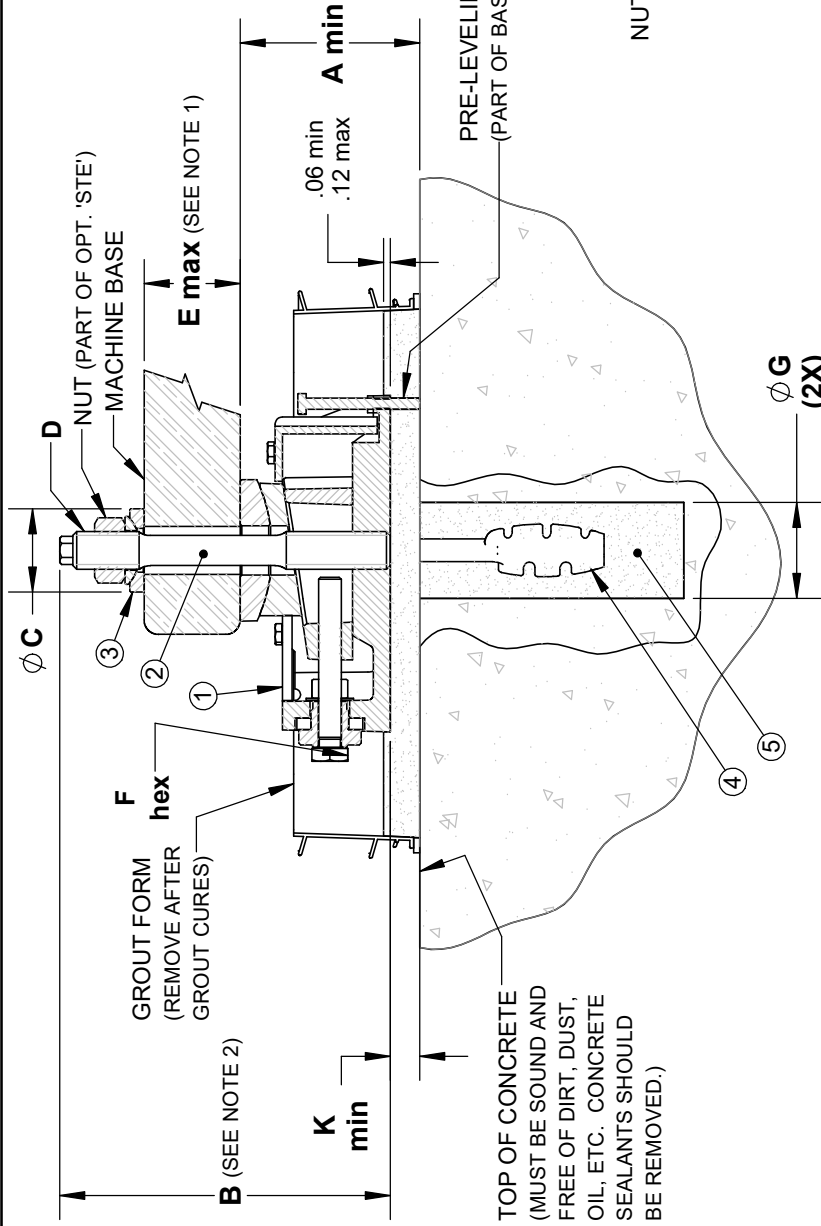
TITLE: STANDARD INSTALLATION DRAWING  
 CUSTOMER / PROJECT: -  
 MACHINE: RK FIXATOR WITH OPTION 'STE' & 'C'  
 MATERIAL: -  
 DRWN BY: WLL DATE: 3-2-18  
 CHKD BY: DLS DATE: 3-2-18

DO NOT SCALE DRAWING		SCALE: NONE	
DWG. NO.	469900-05	SHT	REV
		1/1	C

DOCUMENT IS ELECTRONICALLY CONTROLLED. VERIFY REV PRIOR TO USE.

# BILL OF MATERIALS

ITEM	QTY	DESCRIPTION
1	1	FIXATOR BASIC UNIT
2	1	OPTION 'STE' HOLD DOWN STUD
3	1	OPTION 'P' SPHERICAL WASHER SET
4	1	OPTION 'C' SIDE ANCHOR (2 BOLTS PER UNIT)
5	A/R	V-1 NON-SHRINK GROUT STANDARD V-100 EPOXY GROUT



DIMENSION TABLE (MM/IN.)

FIXATOR SIZE	A		B	C		D	E MAX	F HEX	G		H	H/2	J	K	
	MIN	V-100		OPT. 'P'	OPT. 'R'				V-1	V-100				MIN	V-100
RK I															
RK II	107/4.29	90/3.54	175/6.89	44/1.73	56/2.20	20MM	55/2.17	19/75	60/2.50	45/1.75	100/3.94	50/1.97	140/5.50	30/1.25	13/50
RK III	127/5.08	110/4.33	215/8.46	56/2.20	68/2.68	24MM	70/2.76	24/94	70/2.75	50/2.00	130/5.12	65/2.56	240/9.50	30/1.25	13/50
RK IV	147/5.87	130/5.12	260/10.24	68/2.68	80/3.15	30MM	85/3.35	30/1.18	80/3.25	60/2.50	160/6.30	80/3.15	290/11.50	30/1.25	13/50
RK V	167/6.65	150/5.91	315/12.40	78/3.07	100/3.94	36MM	105/4.13	36/1.42	100/4.00	90/3.50	205/8.07	103/4.04	350/13.75	30/1.25	13/50

REV.	DESCRIPTION	BY	DATE	CHK'D	DATE
A	ADDED METRIC VALUES TO TABLE	DLS	12/10/2025	DLC	12/10/2025



4117 FELTERS ROAD  
MICHIGAN CENTER, MI 49254  
517-764-6060 FAX: 517-764-5607 www.unisorb.com

TITLE: STANDARD INSTALLATION DRAWING, CORED 'C' HOLES

CUSTOMER / PROJECT: -

MACHINE: RK FIXATOR WITH OPTION 'STE' & 'C'

MATERIAL: -

DRWN BY: WLL | DATE: 6-24-19

CHK'D BY: DLS | DATE: 6-24-19

DWG. NO.

**469900-05A**

SHT REV

1/1 **A**

DOCUMENT IS ELECTRONICALLY CONTROLLED. VERIFY REV PRIOR TO USE.

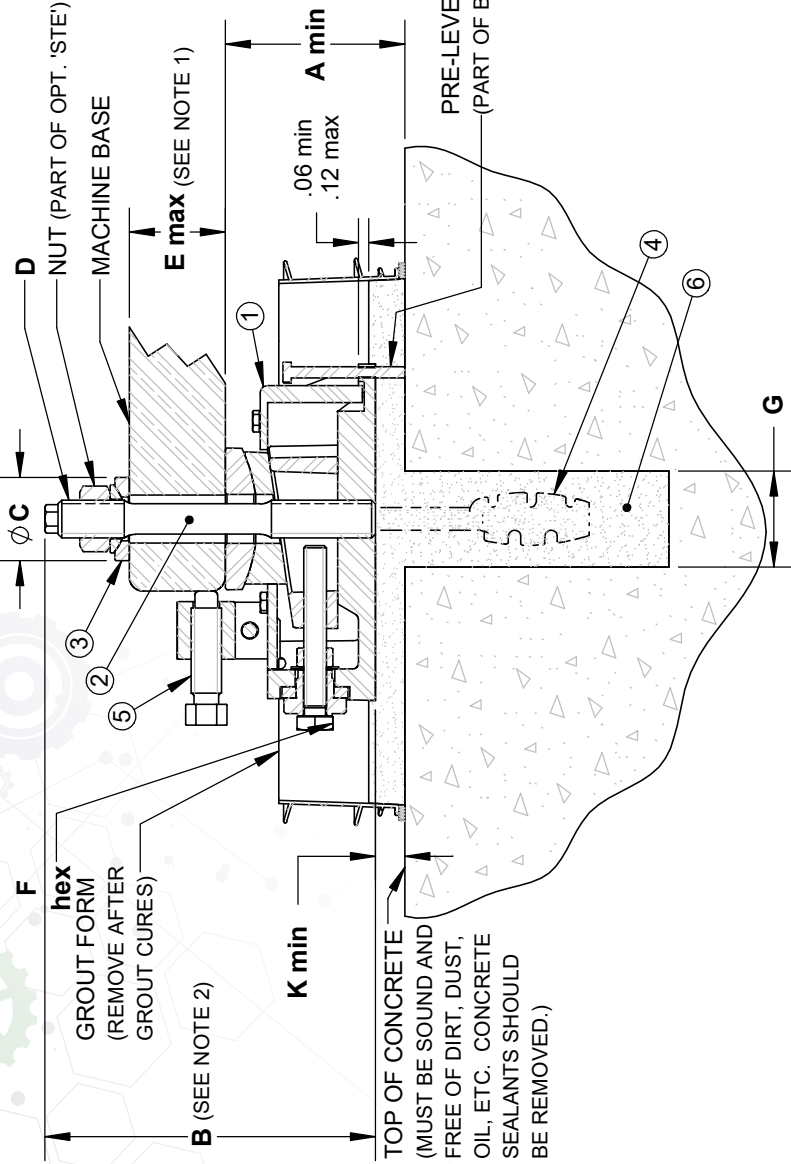
PRELIMINARY DRAWING  
FINAL DRAWING  
CONCEPTUAL

PROPRIETARY AND CONFIDENTIAL  
PROPERTY OF UNISORB. INSTALLATION TECHNOLOGIES. REPRODUCTION OF THIS DRAWING FOR PURPOSES OTHER THAN INSTALLATION OR MAINTENANCE REQUIRES THE WRITTEN CONSENT OF UNISORB. THIS DRAWING IS NOT TO BE REPRODUCED, COPIED, OR TRANSMITTED IN ANY FORM OR BY ANY MEANS, WITHOUT PRIOR WRITTEN CONSENT FROM UNISORB. INSTALLATION TECHNOLOGIES.

- NOTES:
- DIMENSION SHOWN IS FOR STANDARD LENGTH OPTION 'STE'. LONGER STUDS ARE AVAILABLE FOR SPECIAL APPLICATIONS WHERE MACHINE FOOT THICKNESS DICTATES.
  - DIMENSION SHOWN IS WHEN USING STANDARD LENGTH OPTION 'STE'.

# BILL OF MATERIALS

ITEM	QTY	DESCRIPTION
1	1	FIXATOR BASIC UNIT
2	1	OPTION 'STE' HOLD DOWN STUD
3	1	OPTION 'P' SPHERICAL WASHER SET
4	1	OPTION 'C' SIDE ANCHOR (2 BOLTS PER UNIT)
5	1	OPTION 'D' LATERAL STABILIZER
6	A/R	V-1 NON-SHRINK GROUT STANDARD V-100 EPOXY GROUT



PRE-LEVELING SCREW (3X)  
(PART OF BASIC FIXATOR)

MACHINE  
BASE  
NUT (PART OF OPT. 'C')  
GROUT FORM

SECTION A-A

DIMENSION TABLE (MM/IN.)

FIXATOR SIZE	A		B		C		D	E MAX	F HEX	G	H		J	K	
	MIN	V-100	MIN	V-100	OPT. 'P'	OPT. 'R'					V-1	V-100		MIN	V-100
RK I															
RK II	107/4.29	90/3.54	175/6.89	44/1.73	56/2.20	20MM	55/2.17	19/1.75	60/2.50	45/1.75	160/6.25	140/5.50	140/5.50	30/1.25	13/1.50
RK III	127/5.08	110/4.33	215/8.46	56/2.20	68/2.68	24MM	70/2.76	24/9.4	70/2.75	50/2.00	200/8.00	185/7.25	240/9.50	30/1.25	13/1.50
RK IV	147/5.87	130/5.12	260/10.24	68/2.68	80/3.15	30MM	85/3.35	30/1.18	80/3.25	60/2.50	240/9.50	230/9.00	290/11.50	30/1.25	13/1.50
RK V	167/6.65	150/5.91	315/12.40	78/3.07	100/3.94	36MM	105/4.13	36/1.42	100/4.00	90/3.50	305/12.00	270/10.50	350/13.75	30/1.25	13/1.50

C	ADDED METRIC VALUES TO TABLE	DLS	12/10/2025	DLC	12/10/2025
B	REVISED DIMENSION A	WLL	5-2-19	DLS	5-2-19
REV.	DESCRIPTION	BY	DATE	CHK'D	DATE



4117 FELTERS ROAD  
MICHIGAN CENTER, MI 49254  
517-764-6060 FAX: 517-764-5607  
www.unisorb.com

TITLE: STANDARD INSTALLATION DRAWING  
CUSTOMER / PROJECT: -  
MACHINE: RK FIXATOR WITH OPTION 'STE', 'C', & 'D'  
MATERIAL: -  
DWG. NO. 469900-06  
DRWN BY: WLL DATE: 3-6-18  
CHK'D BY: DLS DATE: 3-6-18

UNLESS OTHERWISE SPECIFIED:  
ALL SHARP CORNERS TO BE BROKEN  
ALL BURRS TO BE REMOVED  
DIMENSIONS TO BE TO UNLESS OTHERWISE SPECIFIED  
IN LOCATION MARKED BY (ND)  
SURFACE FINISH 250

PROPERTY AND CONFIDENTIAL  
UNLESS OTHERWISE SPECIFIED, THIS DRAWING IS THE PROPERTY OF UNISORB. NO PART OF THIS DRAWING IS TO BE REPRODUCED OR USED FOR ANY OTHER PURPOSES WITHOUT THE WRITTEN PERMISSION OF UNISORB. UNISORB TECHNOLOGIES, THIS DOCUMENT IS THE PROPERTY OF UNISORB. UNLESS OTHERWISE SPECIFIED, THIS DOCUMENT IS THE PROPERTY OF UNISORB. UNLESS OTHERWISE SPECIFIED, THIS DOCUMENT IS THE PROPERTY OF UNISORB.

LIMIT ON DIMENSIONS  
INCHES METRIC  
±.02 ±.025  
±.012 ±.015  
±.0005 ±.0005  
FRACTIONAL ± 1/16"

DO NOT SCALE DRAWING  
SCALE: NONE

- NOTES:
- DIMENSION SHOWN IS FOR STANDARD LENGTH OPTION 'STE'. LONGER STUDS ARE AVAILABLE FOR SPECIAL APPLICATIONS WHERE MACHINE FOOT THICKNESS DICTATES.
  - DIMENSION SHOWN IS WHEN USING STANDARD LENGTH OPTION 'STE'.

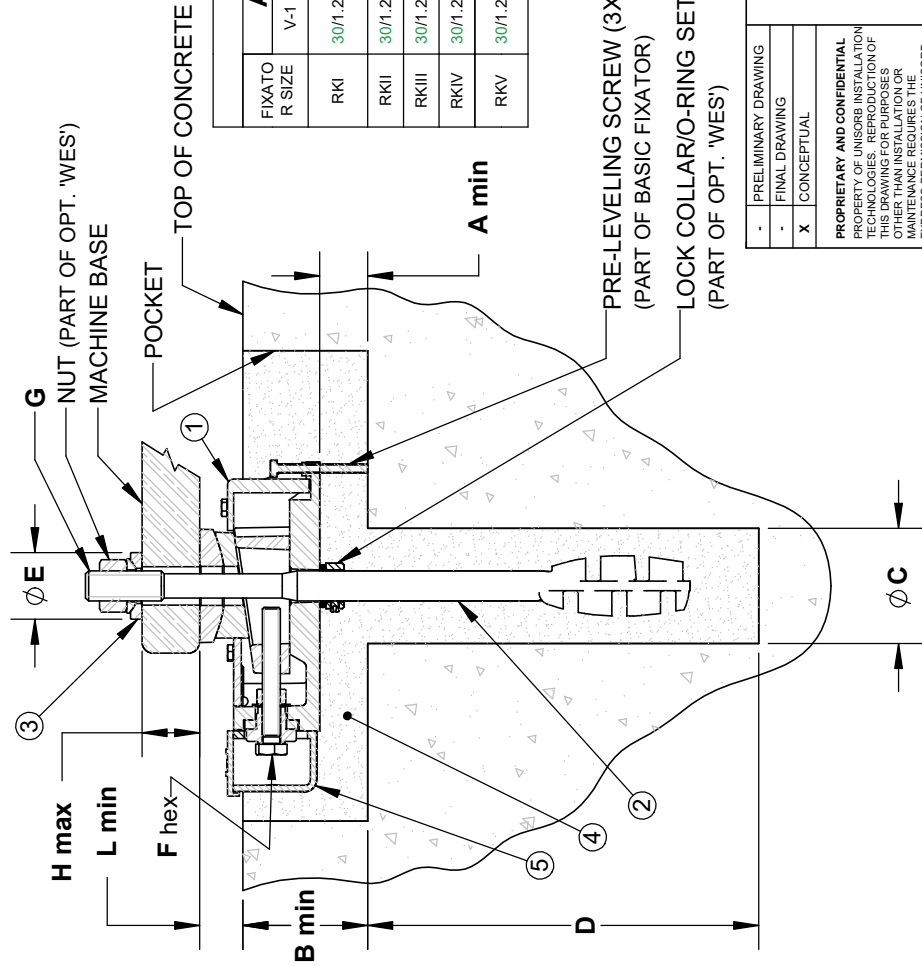
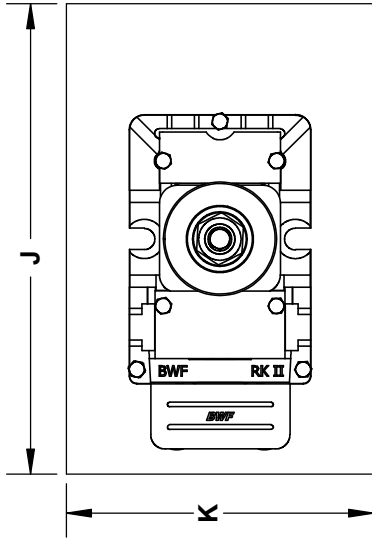
SHT	REV
1/1	C

DOCUMENT IS ELECTRONICALLY CONTROLLED. VERIFY REV PRIOR TO USE.

# BILL OF MATERIALS

ITEM	QTY	DESCRIPTION
1	1	FIXATOR BASIC UNIT WITH OPTION 'F'
2	1	OPTION 'WES' ANCHOR/HOLD DOWN STUD
3	1	OPTION 'P' SPHERICAL WASHER SET
4	A/R	OPTION 'R' OVERSIZE SPHERICAL WASHER SET V-1 NON-SHRINK GROUT STANDARD V-100 EPOXY GROUT
5	1	OPTION 'M' ADJUSTMENT BOLT ENCLOSURE

POCKET SIZE  
TOP VIEW



DIMENSION TABLE (MM/IN.)

FIXATOR R SIZE	A MIN		B MIN		C		D	E		F hex	G	H MAX	J	K	L MIN
	V-1	V-100	V-1	V-100	V-1	V-100		OPT. 'P'	OPT. 'R'						
RKI	30/1.25	13/50	70/2.75	51/2.00	70/3.00	50/2.00	230/9.00	40/1.57	44/1.73	19/7.5	16MM	60/2.36	310/12.25	160/6.25	20/7.9
RKII	30/1.25	13/50	80/3.38	67/2.63	80/3.50	60/2.50	270/10.50	44/1.73	56/2.20	19/7.5	20MM	90/3.54	310/12.25	200/8.00	25/9.8
RKIII	30/1.25	13/50	100/3.88	80/3.13	100/4.00	70/3.00	340/13.50	56/2.20	68/2.68	24/9.4	24MM	100/3.94	380/15.00	250/10.00	30/1.18
RKIV	30/1.25	13/50	120/4.50	95/3.75	120/5.00	80/3.50	410/16.25	68/2.68	80/3.15	30/1.18	30MM	135/5.31	450/17.75	300/12.00	35/1.38
RKV	30/1.25	13/50	140/5.13	111/4.38	150/6.00	100/4.00	570/22.50	78/3.07	100/3.94	36/1.42	36MM	150/5.91	550/21.50	330/13.00	40/1.57
					170/7.00	110/4.50	760/30.00	100/3.94	125/4.92	42MM	200/7.87				

REV.	DESCRIPTION	BY	DATE	CHK'D	DATE
C	ADDED METRIC VALUES TO TABLE	DLS	12/10/2025	DLC	12/10/2025
B	REVISED DIMENSION B	WLL	5/2/2019	DLS	5/2/2019



4117 FELTERS ROAD  
MICHIGAN CENTER, MI 49254  
517-764-6060 FAX: 517-764-5607 www.unisorb.com

INSTALLATION SOLUTIONS

TITLE: STANDARD INSTALLATION DRAWING

CUSTOMER / PROJECT: -

MACHINE: RK FIXATOR WITH OPTIONS 'WES' & 'M'

MATERIAL: -

DRWN BY: WLL | DATE: 3-7-18

CHK'D BY: DLS | DATE: 3-7-18

DWG. NO. 469900-07

SHT REV 1/1 C

DOCUMENT IS ELECTRONICALLY CONTROLLED. VERIFY REV PRIOR TO USE.

-	PRELIMINARY DRAWING
-	FINAL DRAWING
x	CONCEPTUAL

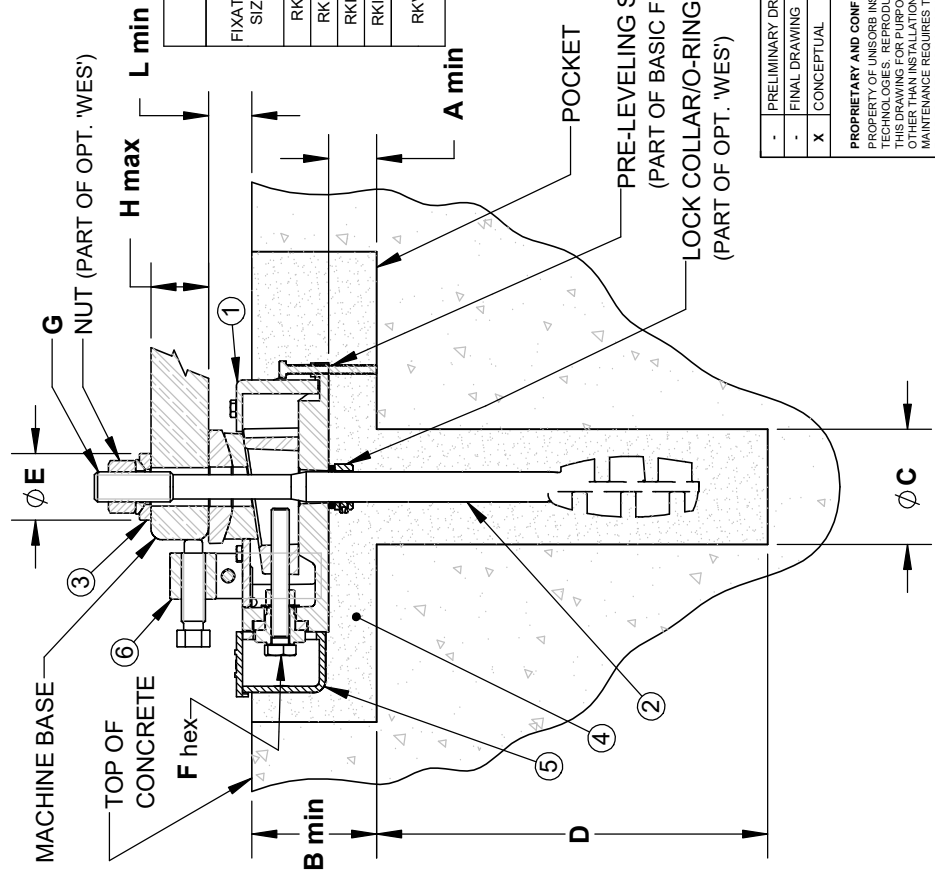
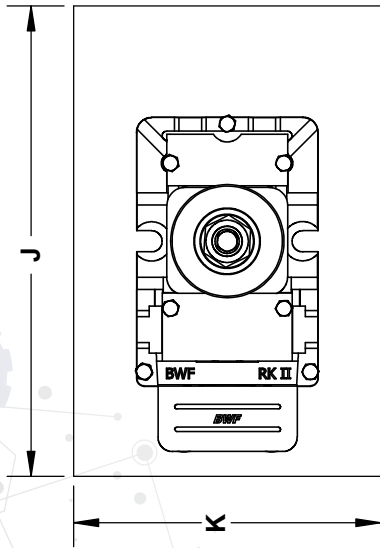
PROPRIETARY AND CONFIDENTIAL  
PROPERTY OF UNISORB. INSTALLATION  
TECHNOLOGIES. REPRODUCTION OF  
THIS DRAWING FOR PURPOSES  
OTHER THAN INSTALLATION OR  
MAINTENANCE REQUIRES THE  
WRITTEN CONSENT OF UNISORB.  
INSTALLATION TECHNOLOGIES. THIS  
DRAWING IS NOT TO BE REPRODUCED,  
USED FOR FABRICATION OR  
DISCLOSED TO THIRD PARTIES  
WITHOUT PRIOR WRITTEN CONSENT  
OF UNISORB. INSTALLATION  
TECHNOLOGIES.

DO NOT SCALE DRAWING  
SCALE: NONE

# BILL OF MATERIALS

ITEM	QTY	DESCRIPTION
1	1	FIXATOR BASIC UNIT WITH OPTION 'F'
2	1	OPTION 'WES' ANCHOR/HOLD DOWN STUD
3	1	OPTION 'P' SPHERICAL WASHER SET
4	A/R	OPTION 'R' OVERSIZE SPHERICAL WASHER SET V-1 NON-SHRINK GROUT STANDARD V-100 EPOXY GROUT
5	1	OPTION 'M' ADJUSTMENT BOLT ENCLOSURE
6	1	OPTION 'D' LATERAL STABILIZER

POCKET SIZE  
TOP VIEW



DIMENSION TABLE (MM/IN.)

FIXATOR SIZE	A MIN		B MIN		C			D		E		F hex	G	H MAX	J	K	L MIN
	V-1	V-100	V-1	V-100	V-1	V-100	V-1	V-100	OPT. 'P'	OPT. 'R'							
RKI	30/1.25	13/1.50	70/2.75	51/2.00	70/3.00	50/2.00	230/9.00	40/1.57	44/1.73	19/1.75	16MM	60/2.36	310/12.25	160/6.25	20/1.79		
RKII	30/1.25	13/1.50	80/3.38	67/2.63	80/3.50	60/2.50	270/10.50	44/1.73	56/2.20	19/1.75	20MM	90/3.54	310/12.25	200/8.00	25/1.98		
RKIII	30/1.25	13/1.50	100/3.88	80/3.13	100/4.00	70/3.00	340/13.50	56/2.20	68/2.68	24/1.94	24MM	100/3.94	380/15.00	250/10.00	30/1.18		
RKIV	30/1.25	13/1.50	120/4.50	95/3.75	120/5.00	80/3.50	410/16.25	68/2.68	80/3.15	30/1.18	30MM	135/5.31	450/17.75	300/12.00	35/1.38		
RKV	30/1.25	13/1.50	140/5.13	111/4.38	150/6.00	100/4.00	570/22.50	78/3.07	100/3.94	36/1.42	36MM	150/5.91	560/21.50	330/13.00	40/1.57		
					170/7.00	110/4.50	760/30.00	100/3.94	125/4.92	42MM	200/7.87						

REV.	DESCRIPTION	BY	DATE	CHKD	DATE
B	ADDED METRIC VALUES TO TABLE	DLS	12/10/2025	DLC	12/10/2025
A	DRAWING CONVERTED TO SW, OTHER VERSIONS OBSOLETE. REVISED DIMS A, B, H, & L	WLL	3/6/2018	DLS	3/6/2018



4117 FELTERS ROAD  
MICHIGAN CENTER, MI 49254  
517-764-6060 FAX: 517-764-5607  
www.unisorb.com

TITLE: STANDARD INSTALLATION DRAWING

CUSTOMER / PROJECT: -

MACHINE: RK FIXATOR WITH OPTIONS 'WES', 'M', & 'D'

MATERIAL: -

DRWN BY: WLL DATE: 3-7-18

CHKD BY: DLS DATE: 3-7-18

SCALE: NONE

PRELIMINARY DRAWING	
FINAL DRAWING	
CONCEPTUAL	X

PROPRIETARY AND CONFIDENTIAL  
PROPERTY OF UNISORB INSTALLATION  
TECHNOLOGIES. REPRODUCTION OF  
THIS DRAWING FOR ANY PURPOSES  
OTHER THAN INSTALLATION OR  
MAINTENANCE REQUIRES THE  
EXPRESS PERMISSION OF UNISORB  
INSTALLATION TECHNOLOGIES. THIS  
DRAWING IS NOT TO BE REPRODUCED,  
USED FOR PARTS, OR REPRODUCED  
WITHOUT PRIOR WRITTEN CONSENT  
FROM UNISORB INSTALLATION  
TECHNOLOGIES.

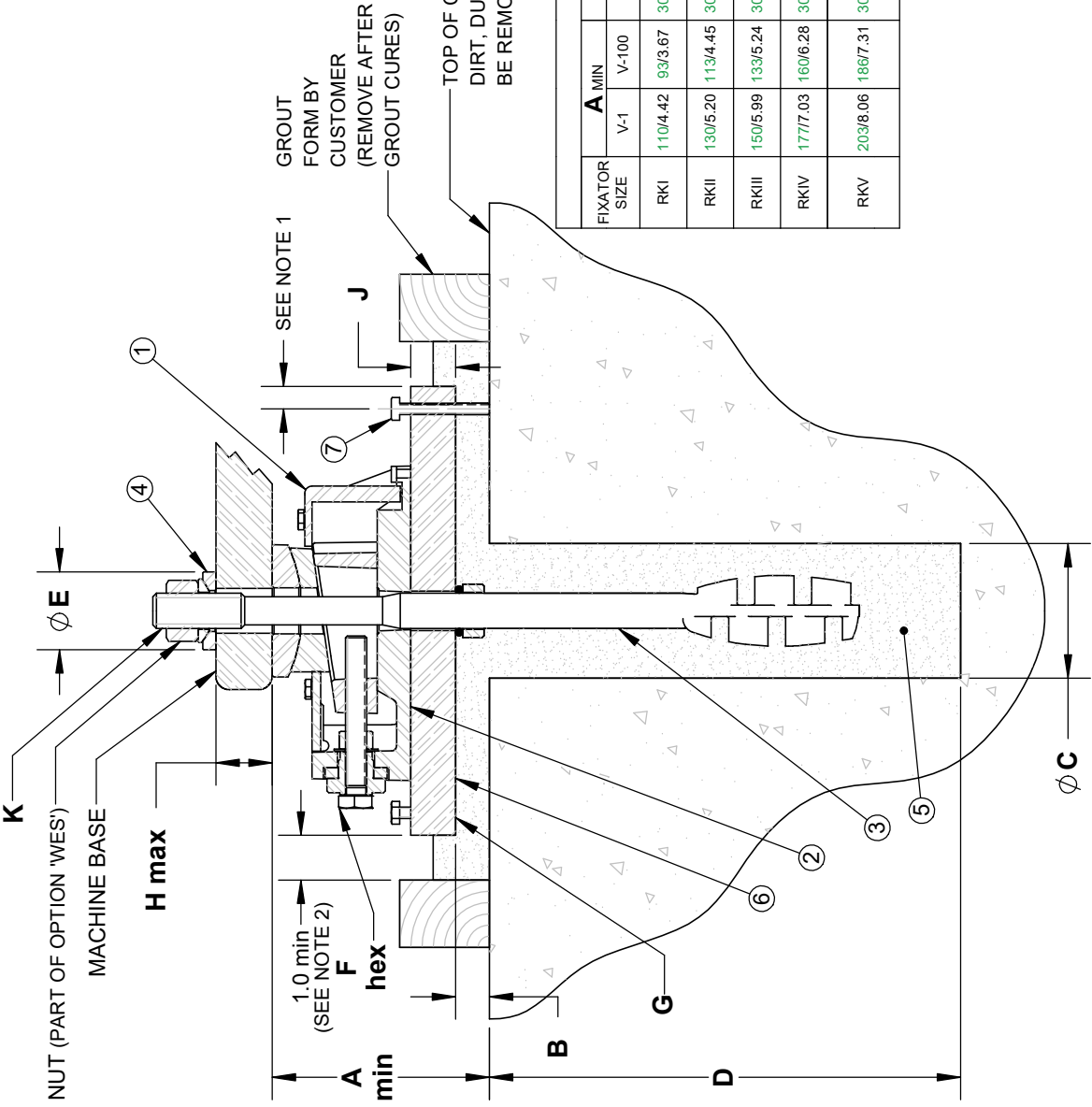
DWG. NO.  
**469900-08**

SHT REV  
1/1 **B**

DOCUMENT IS ELECTRONICALLY CONTROLLED. VERIFY REV PRIOR TO USE.

# BILL OF MATERIALS

ITEM	QTY	DESCRIPTION
1	1	FIXATOR BASIC UNIT WITH OPTION 'F'
2	1	OPTION 'B' MACHINE BASE
3	1	OPTION 'WES' ANCHOR/HOLD DOWN STUD
4	1	OPTION 'P' SPHERICAL WASHER SET
5	A/R	OPTION 'R' OVERSIZE SPHERICAL WASHER SET V-1 NON-SHRINK GROUT
6	1	STANDARD V-100 EPOXY GROUT STEEL PLATE, (SEE 'G' & 'H' DIM'S) SUPPLIED BY UNISORB OR CUSTOMER
7	3	OPTIONAL LEVELING BOLT, VARIABLE SIZE, FURNISHED BY UNISORB OR CUSTOMER



DIMENSION TABLE (MM/IN.)

FIXATOR SIZE	A MIN		B MIN		C		D		E		F hex	G	H MAX	J	K
	V-1	V-100	V-1	V-100	V-1	V-100	OPT. 'P'	OPT. 'R'	OPT. 'P'	OPT. 'R'					
RKI	110/4.42	93/3.67	30/1.25	131.50	70/3.00	50/2.00	230/9.00	40/1.57	441.73	19/0.75	152x229/6x9	35/1.36	251/1.00	16MM	
RKII	130/5.20	113/4.45	30/1.25	131.50	80/3.50	60/2.50	270/10.50	44/1.73	562.20	19/0.75	178x254/7x10	65/2.54	251/1.00	20MM	
RKIII	150/5.99	133/5.24	30/1.25	131.50	100/4.00	70/3.00	340/13.50	56/2.20	682.68	24/1.94	203x305/8x12	75/2.94	251/1.00	24MM	
RKIV	177/7.03	160/6.28	30/1.25	131.50	120/5.00	80/3.50	410/16.25	68/2.68	803.15	30/1.18	254x381/10x15	103/4.06	321/1.25	30MM	
RKV	203/8.06	189/7.31	30/1.25	131.50	150/6.00	100/4.00	570/22.50	78/3.07	100/3.94	36/1.42	381x508/15x20	112/4.41	381/1.50	36MM	
					170/7.00	110/4.50	760/30.00	100/3.94	125/4.92			162/6.37		42MM	

REV.	DESCRIPTION	BY	DATE	CHK'D	DATE
B	ADDED METRIC VALUES TO TABLE	DLS	12/10/2025	DLC	12/10/2025
A	DRAWING CONVERTED TO SW, OTHER VERSIONS OBSOLETE. REVISED DIM. A, H & J	WLL	2/27/2018	DLS	2/27/2018



4117 FELTERS ROAD  
MICHIGAN CENTER, MI 49254  
517-764-6060 FAX: 517-764-5607 www.unisorb.com

INSTALLATION SOLUTIONS  
STANDARD INSTALLATION DRAWING

CUSTOMER / PROJECT: -  
MACHINE: RK FIXATOR WITH OPTION 'WES' ON STEEL PLATE  
MATERIAL: -  
DWG. NO. 469900-10

DRWN BY: WLL DATE: 3-8-18  
CHKD BY: DLS DATE: 3-8-18

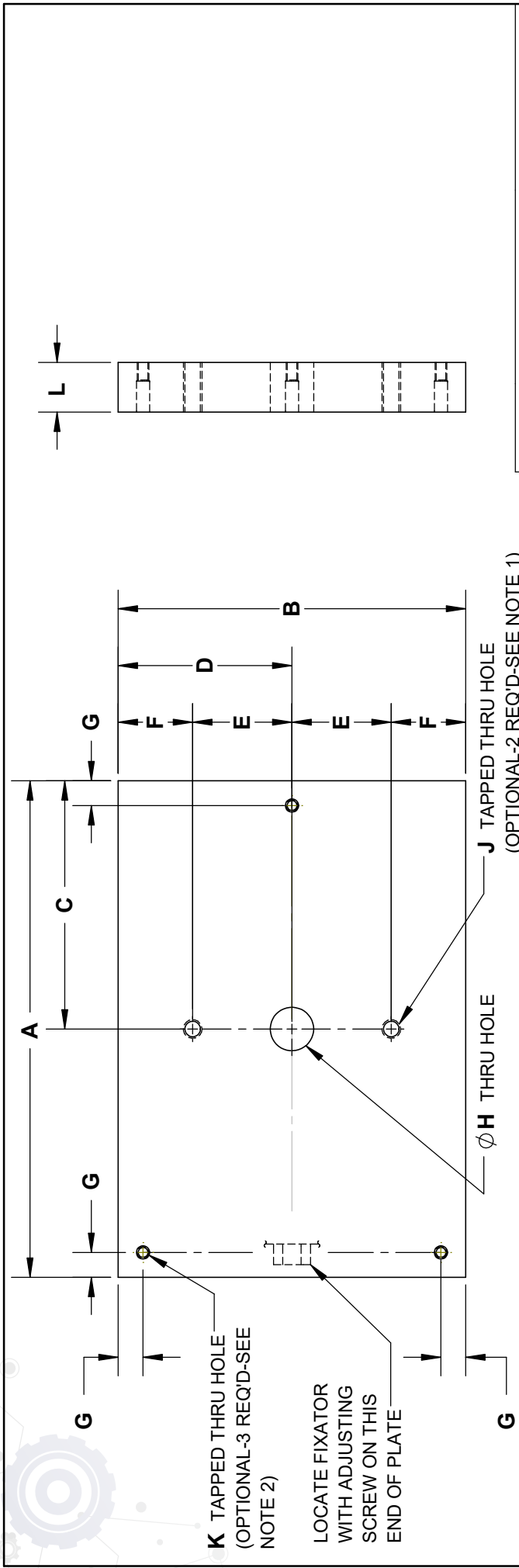
SHT REV 1/1

PRELIMINARY DRAWING  
FINAL DRAWING  
CONCEPTUAL

PROPRIETARY AND CONFIDENTIAL  
PROPERTY OF UNISORB. INSTALLATION TECHNOLOGIES. REPRODUCTION OF THIS DRAWING FOR PURPOSES OTHER THAN INSTALLATION OR MAINTENANCE REQUIRES THE WRITTEN CONSENT OF UNISORB. THIS DRAWING IS NOT TO BE REPRODUCED, COPIED, OR TRANSMITTED IN ANY FORM OR BY ANY MEANS, WITHOUT PRIOR WRITTEN CONSENT OF UNISORB. INSTALLATION TECHNOLOGIES.

NOTES:

- SEE UNISORB DRAWING 469900-10A FOR DIMENSIONAL LAYOUT OF STEEL PLATES.
- 1" MIN. OUTSIDE OF STEEL PLATE ON 3 SIDES, AND 3" MIN. OUTSIDE OF STEEL PLATE ON GROUT POUR SIDE.



**BOLTS FOR TAPPED HOLES**

FIXATOR SIZE	J (2) BOLTS	K (3) BOLTS
RK I	3/8-16 x 1.50 HEX HEAD WITH FLAT WASHER	M6-1.0 X 100 HEX HEAD
RK II	3/8-16 x 1.50 HEX HEAD WITH FLAT WASHER	M6-1.0 X 100 HEX HEAD
RK III	1/2-13 x 1.75 HEX HEAD WITH FLAT WASHER	M6-1.0 X 100 HEX HEAD
RK IV	3/4-10 x 2.25 HEX HEAD WITH FLAT WASHER	M8-1.25 X 100 HEX HEAD
RK V	1-8 x 2.25 HEX HEAD WITH FLAT WASHER	M8-1.25 X 100 HEX HEAD

**DIMENSION TABLE (MM/IN.)**

FIXATOR SIZE	A	B	C	D	E	F	G	H	J	K	L
RK I	229/9.00	152/6.00	114/4.50	76/3.00	45/1.77	30/1.19	13/0.50	18/0.69	3/8-16	M6-1.0 6H THROUGH ALL C'BORE 17/64"Ø √ 5/8"	25/1.00
RK II	254/10.00	178/7.00	127/5.00	89/3.50	50/1.97	38/1.50	13/0.50	22/0.88	3/8-16	M6-1.0 6H THROUGH ALL C'BORE 17/64"Ø √ 5/8"	25/1.00
RK III	305/12.00	203/8.00	152/6.00	102/4.00	65/2.56	35/1.38	13/0.50	25/1.00	1/2-13	M6-1.0 6H THROUGH ALL C'BORE 17/64"Ø √ 5/8"	25/1.00
RK IV	381/15.00	254/10.00	191/7.50	127/5.00	80/3.15	46/1.82	13/0.50	32/1.25	3/4-10	M8-1.25 6H THROUGH ALL C'BORE 11/32"Ø √ 5/8"	32/1.25
RK V	508/20.00	381/15.00	254/10.00	191/7.50	103/4.04	88/3.46	19/0.75	36MM 42MM	1-8	M8-1.25 6H THROUGH ALL C'BORE 11/32"Ø √ 5/8"	38/1.50

REV.	DESCRIPTION	DATE	CHK'D
C	ADDED METRIC VALUES TO TABLE.	12/11/2025	DLC
B	UPDATED REFERENCES FOR K HOLES. ADDED NOTE	3/16/2020	DLC
A	DRAWING CONVERTED TO SW. OTHER VERSIONS OBSOLETE	2-28-18	DLS

**NOTES:**

- TAPPED HOLES **J** WILL ONLY BE REQ'D WHEN OPTION 'D' LATERAL STABILIZER IS USED.
- TAPPED HOLES **K** WILL ONLY BE REQ'D IF CUSTOMER IS GOING TO USE PRE-LEVELING BOLTS FOR FIXATOR INSTALLATION DRAWING, UTILIZING STEEL PLATES, SEE UNISORB DRAWING 469900-10. SEE TECHNICAL BULLETIN LB-0155-2 FOR PRODUCT CODE AND SPECIFICATION INFORMATION.

UNISORB®  
INSTALLATION SOLUTIONS

4117 FELTERS RD., MICHIGAN CENTER, MI 49254  
517-764-6060 FAX: 517-764-5607  
www.unisorb.com

TITLE: DIMENSIONAL LAYOUT

CUSTOMER / PROJECT: -

MACHINE: STEEL PLATE FOR FIXATOR WITH OPTION 'WES'

MATERIAL: -

DRWN BY: WLL | DATE: 3-8-18

CHK'D BY: DLS | DATE: 3-8-18

PROPERTY OF UNISORB INSTALLATION TECHNOLOGIES. REPRODUCTION OF THIS DRAWING FOR ANY PURPOSE OTHER THAN INSTALLATION OR MAINTENANCE REQUIRES THE EXPRESS PERMISSION OF UNISORB INSTALLATION TECHNOLOGIES. THIS DRAWING IS NOT TO BE REPRODUCED, DISCLOSED TO THIRD PARTIES WITHOUT PRIOR WRITTEN CONSENT FROM UNISORB INSTALLATION TECHNOLOGIES.

DO NOT SCALE DRAWING

SCALE: NONE

REV	DATE	BY	CHK'D
1/1	12/11/2025	DLC	DLC
1/1	5/22/2023	DLS	DLS

**469900-10A**

DWG. NO.

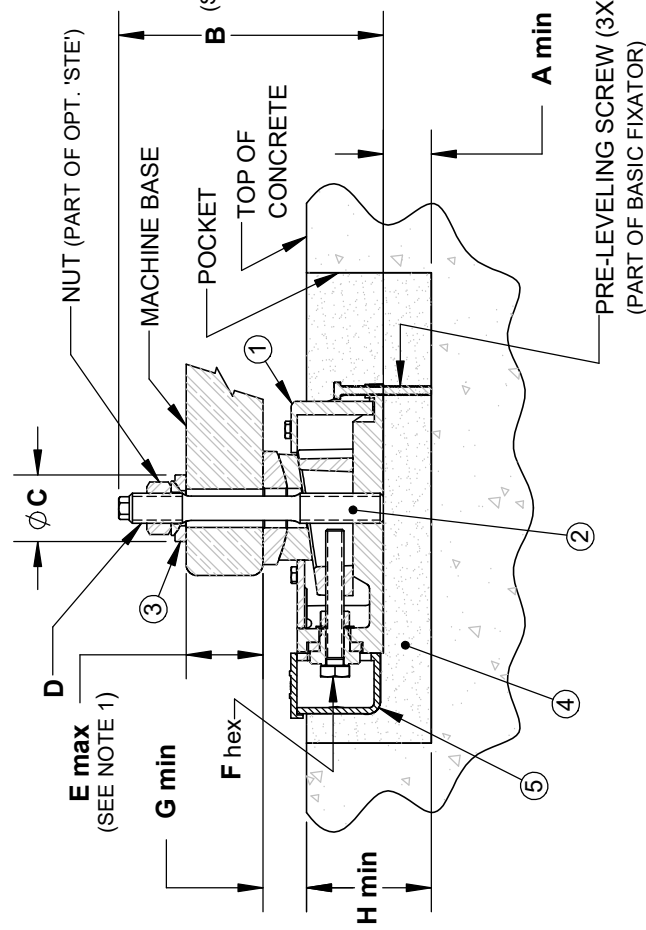
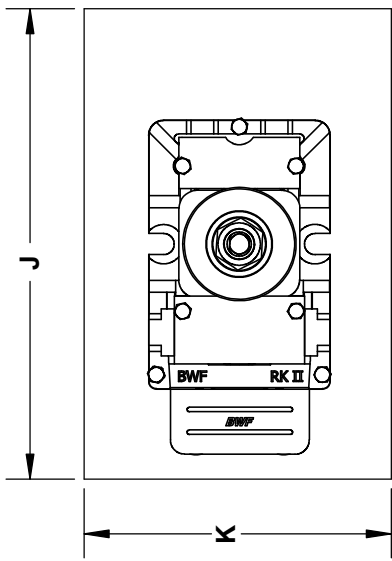
SHT REV

1/1 **C**

DOCUMENT IS ELECTRONICALLY CONTROLLED. VERIFY REV PRIOR TO USE.

BILL OF MATERIALS		
ITEM	QTY	DESCRIPTION
1	1	FIXATOR BASIC UNIT
2	1	OPTION 'STE' HOLD DOWN STUD
3	1	OPTION 'P' SPHERICAL WASHER SET
4	A/R	OPTION 'R' OVERSIZE SPHERICAL WASHER SET
		V-1 NON-SHRINK GROUT
5	1	STANDARD V-100 EPOXY GROUT
		OPTION 'M' ADJUSTMENT BOLT ENCLOSURE

POCKET SIZE  
TOP VIEW



(SEE NOTE 2)

DIMENSION TABLE (MM/IN.)

FIXATOR SIZE	A MIN		B	C		D	E MAX	F hex	G MIN	H MIN		J	K
	V-1	V-100		OPT. 'P'	OPT. 'R'					V-1	V-100		
RKI													
RKII	30/1.25	13/50	175/6.89	44/1.73	56/2.20	20MM	55/2.17	19/75	25/98	80/3.38	67/2.63	310/12.25	200/8.00
RKIII	30/1.25	13/50	215/8.46	56/2.20	68/2.68	24MM	70/2.76	24/94	30/1.18	100/3.88	80/3.13	380/15.00	250/10.00
RKIV	30/1.25	13/50	260/10.24	68/2.68	80/3.15	30MM	85/3.35	30/1.18	35/1.38	120/4.50	95/3.75	450/17.75	300/12.00
RKV	30/1.25	13/50	315/12.40	78/3.07	100/3.94	36MM	105/4.13	36/1.42	40/1.57	140/5.13	111/4.38	550/21.50	330/13.00

B	ADDED METRIC VALUES TO TABLE.	DLS	12/12/2025	DLC	12/12/2025
A	DRAWING CONVERTED TO SW/ OTHER VERSIONS OBSOLETE. REVISED DIM A, G, & H.	WLL	3/6/2018	DLS	3/6/2018
REV.	DESCRIPTION	BY	DATE	CHK'D	DATE



4117 FELTERS RD., MICHIGAN CENTER, MI 49254  
517-764-6060 FAX: 517-764-5607  
www.unisorb.com

INSTALLATION SOLUTIONS  
TITLE: STANDARD INSTALLATION DRAWING

CUSTOMER / PROJECT: -

MACHINE: FIXATOR WITH OPTIONS 'STE' & 'M'

MATERIAL: -

DRWN BY: WLL | DATE: 3-9-18  
CHKD BY: DLS | DATE: 3-9-18

DWG. NO. 469900-12  
SHT REV 1/1 B

DOCUMENT IS ELECTRONICALLY CONTROLLED. VERIFY REV PRIOR TO USE.

-	PRELIMINARY DRAWING
-	FINAL DRAWING
x	CONCEPTUAL

PROPRIETARY AND CONFIDENTIAL  
PROPERTY OF UNISORB. INSTALLATION TECHNOLOGIES, REPRODUCTION OF THIS DRAWING FOR PURPOSES OTHER THAN INSTALLATION OR MAINTENANCE REQUIRES THE WRITTEN CONSENT OF UNISORB. THIS DRAWING IS NOT TO BE REPRODUCED OR USED FOR FABRICATION OR DISCLOSED TO THIRD PARTIES WITHOUT PRIOR WRITTEN CONSENT FROM UNISORB. INSTALLATION TECHNOLOGIES.

DO NOT SCALE DRAWING  
SCALE: NONE

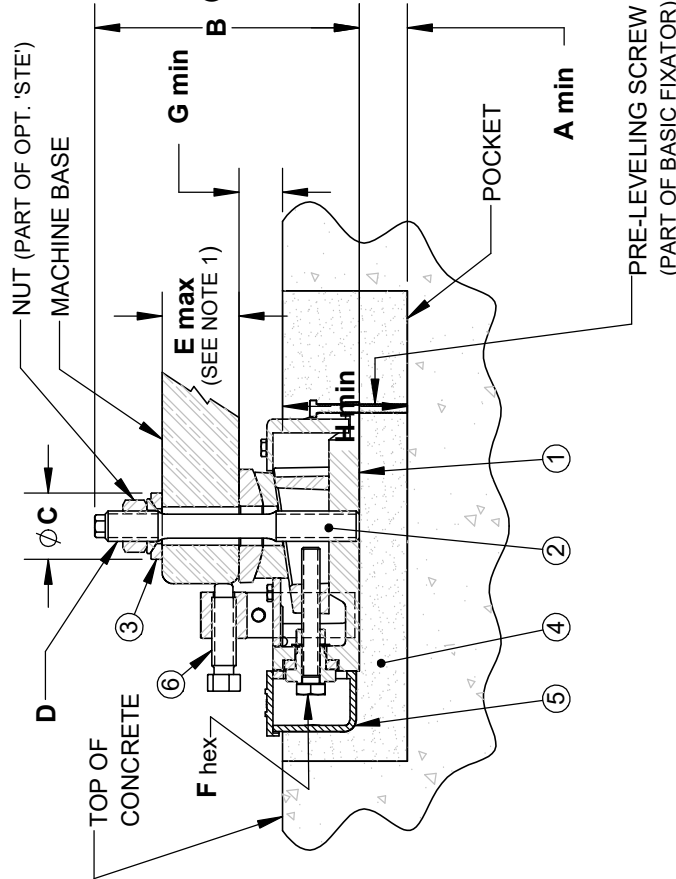
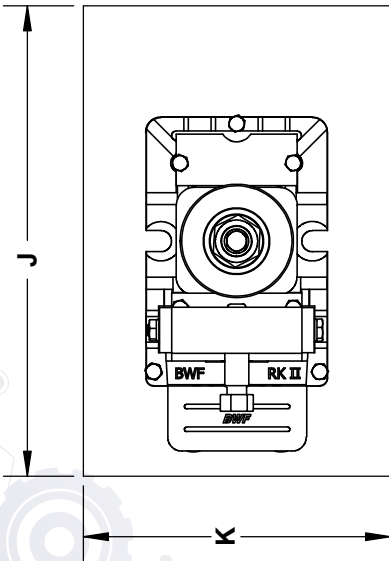
NOTES:

1. DIMENSION SHOWN IS FOR STANDARD LENGTH OPTION 'STE'. LONGER STUDS ARE AVAILABLE FOR SPECIAL APPLICATIONS WHERE MACHINE FOOT THICKNESS DICTATES.
2. DIMENSION SHOWN IS WHEN USING STANDARD LENGTH OPTION 'STE'.

# BILL OF MATERIALS

ITEM	QTY	DESCRIPTION
1	1	FIXATOR BASIC UNIT
2	1	OPTION 'STE' HOLD DOWN STUD
3	1	OPTION 'P' SPHERICAL WASHER SET OPTION 'R' OVERSIZE SPHERICAL WASHER SET V-1 NON-SHRINK GROUT
4	A/R	STANDARD V-100 EPOXY GROUT
5	1	OPTION 'M' ADJUSTMENT BOLT ENCLOSURE
6	1	OPTION 'D' LATERAL STABILIZER

POCKET SIZE  
TOP VIEW



(SEE NOTE 2)

DIMENSION TABLE (MM/IN.)

FIXATOR SIZE	A MIN		B	C		D	E MAX	F hex	G MIN	H MIN		J	K
	V-1	V-100		OPT. 'P'	OPT. 'R'					V-1	V-100		
RKI	30/1.25	13/50	175/6.89	44/1.73	56/2.20	20MM	55/2.17	19/75	25/98	86/3.38	67/2.63	310/12.25	200/8.00
RKII	30/1.25	13/50	215/8.46	56/2.20	68/2.68	24MM	70/2.76	24/94	30/1.18	99/3.88	80/3.13	380/15.00	250/10.00
RKIV	30/1.25	13/50	260/10.24	68/2.68	80/3.15	30MM	85/3.35	30/1.18	35/1.38	114/4.50	95/3.75	450/17.75	300/12.00
RKV	30/1.25	13/50	315/12.40	78/3.07	100/3.94	36MM	105/4.13	36/1.42	40/1.57	130/5.13	111/4.38	550/21.50	330/13.00

REV.	DESCRIPTION	BY	DATE	CHKD	DATE
B	ADDED METRIC VALUES TO TABLE.	DLS	12/12/2025	DLC	12/12/2025
A	DRAWING CONVERTED TO SW, OTHER VERSIONS OBSOLETE. REVISED DIM A, G, & H.	WLL	3/6/2018	DLS	3/6/2018



4117 FELTERS RD., MICHIGAN CENTER, MI 49254  
517-764-6060 FAX: 517-764-5607  
www.unisorbd.com

TITLE: STANDARD INSTALLATION DRAWING

CUSTOMER / PROJECT: -

MACHINE: FIXATOR WITH OPTIONS 'STE', 'M' & 'D'

MATERIAL: -

DRWN BY: WLL DATE: 3-12-18

CHK'D BY: DLS DATE: 3-12-18

DWG. NO. 469900-14

SHT REV 1/1

B

DO NOT SCALE DRAWING SCALE: NONE DOCUMENT IS ELECTRONICALLY CONTROLLED. VERIFY REV PRIOR TO USE.

-	PRELIMINARY DRAWING
-	FINAL DRAWING
X	CONCEPTUAL

PROPERTY AND CONFIDENTIAL  
PROPERTY OF UNISORB INSTALLATION  
SOLUTIONS. THIS DRAWING IS THE PROPERTY OF  
UNISORB INSTALLATION SOLUTIONS AND IS NOT TO BE  
REPRODUCED OR TRANSMITTED IN ANY FORM OR BY  
ANY MEANS, ELECTRONIC OR MECHANICAL, INCLUDING  
PHOTOCOPYING, RECORDING, OR BY ANY INFORMATION  
SYSTEMS WITHOUT PERMISSION IN WRITING FROM  
UNISORB INSTALLATION SOLUTIONS. THIS  
DRAWING IS THE PROPERTY OF UNISORB  
INSTALLATION SOLUTIONS AND IS NOT TO BE  
REPRODUCED OR TRANSMITTED IN ANY FORM OR BY  
ANY MEANS, ELECTRONIC OR MECHANICAL, INCLUDING  
PHOTOCOPYING, RECORDING, OR BY ANY INFORMATION  
SYSTEMS WITHOUT PERMISSION IN WRITING FROM  
UNISORB INSTALLATION SOLUTIONS.

NOTES:

1. DIMENSION SHOWN IS FOR STANDARD LENGTH OPTION 'STE'. LONGER STUDS ARE AVAILABLE FOR SPECIAL APPLICATIONS WHERE MACHINE FOOT THICKNESS DICTATES.
2. DIMENSION SHOWN IS WHEN USING STANDARD LENGTH OPTION 'STE'.

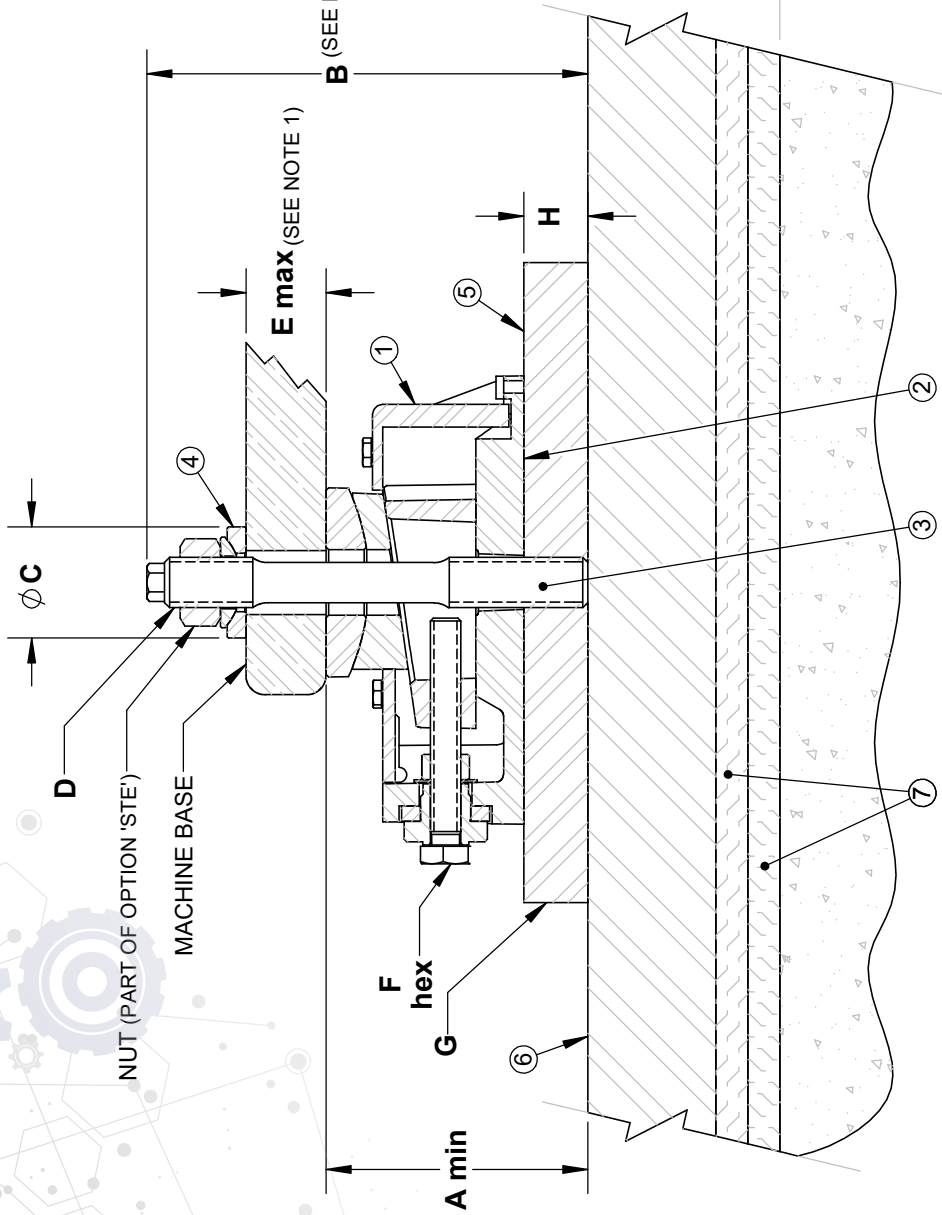


# BILL OF MATERIALS

ITEM	QTY	DESCRIPTION
1	1	FIXATOR BASIC UNIT WITH OPTION 'F'
2	1	OPTION 'B' MACHINE BASE
3	1	OPTION 'STE' HOLD DOWN STUD
4	1	OPTION 'P' SPHERICAL WASHER SET
5	1	OPTION 'R' OVERSIZE SPHERICAL WASHER SET
6	1	STEEL PLATE, (SEE 'G' & 'H' DIM'S). SUPPLIED BY UNISORB OR CUSTOMER
7	1	STEEL BASEPLATE (BY CUSTOMER)

B (SEE NOTE 2)

E max (SEE NOTE 1)



DIMENSION TABLE (MM/IN.)

FIXATOR SIZE	A min	B	C		D	E max	F hex	G PLATE SIZE	H
			OPT. 'P'	OPT. 'R'					
RKI	80/3.15	170/6.69	40/1.57	44/1.73	16MM	55/2.17	19/1.75	152x229 / 6x9	25/1.00
RKII	100/3.94	175/6.89	44/1.73	56/2.20	20MM	30/1.18	19/1.75	178x254 / 7x10	25/1.00
RKIII	120/4.72	215/8.46	56/2.20	68/2.68	24MM	45/1.77	24/1.94	203x305 / 8x12	25/1.00
RKIV	147/5.79	260/10.24	68/2.68	80/3.15	30MM	53/2.09	30/1.18	254x381 / 10x15	32/1.25
RKV	173/6.81	315/12.40	78/3.07	100/3.94	36MM	67/2.64	36/1.42	381x508 / 15x20	38/1.50

TOP OF CONCRETE (FLOOR UNDER BASEPLATE SHOULD BE LEVEL)

B	ADDED METRIC VALUES TO TABLE.	DLS	12/11/2025	DLC	12/12/2025
A	DRAWING CONVERTED TO SW, OTHER VERSIONS OBSOLETE. REVISED RKI A DIMENSION.	WLL	3/14/2018	DLS	3/14/2018
REV.	DESCRIPTION	BY	DATE	CHK'D	DATE



4117 FELTERS RD., MICHIGAN CENTER, MI 49254  
517-764-6060 FAX: 517-764-5607  
www.unisorb.com

TITLE: STANDARD INSTALLATION DRAWING

MACHINE: RK FIXATOR WITH OPT. 'STE' ON STEEL PLATE, ON STEEL BASEPLATE & IB-500-B1 ISOLATION PADS

MATERIAL: -	DWG. NO.	SHT	REV
DRWN BY: WLL	DATE: 3-14-18	1 / 1	B
CHK'D BY: DLS	DATE: 3-14-18		

DOCUMENT IS ELECTRONICALLY CONTROLLED. VERIFY REV PRIOR TO USE.

PRELIMINARY DRAWING	
FINAL DRAWING	
CONCEPTUAL	

PROPERTY AND CONFIDENTIAL TECHNOLOGIES. REPRODUCTION OF THIS DOCUMENT FOR PURPOSES OTHER THAN INSTALLATION OR MAINTENANCE REQUIRES THE EXPRESS PERMISSION OF UNISORB. INSTALLATION TECHNOLOGIES. THIS DRAWING IS TO BE REPRODUCED WITHOUT PRIOR WRITTEN CONSENT FROM UNISORB. INSTALLATION TECHNOLOGIES.

DO NOT SCALE DRAWING  
SCALE: NONE

NOTES:

- DIM SHOWN IS FOR STANDARD LENGTH OPT. 'STE'. LONGER STUDS ARE AVAILABLE FOR SPECIAL APPLICATIONS WHERE MACHINE FOOT THICKNESS DICTATES.
- DIM SHOWN IS WHEN USING STANDARD LENGTH OPT. 'STE'. THICKNESS OF BASEPLATE VARIES DEPENDING ON APPLICATION.
- SEE UNISORB DRAWING 469900-03A FOR DIMENSIONAL LAYOUT OF STEEL PLATE UNDER THE FIXATOR.
- STEEL PLATE UNDER FIXATOR MAY BE EITHER BOLTED OR WELDED TO STEEL BASEPLATE.

# Proper Grouting Procedure

**1 PREPARATION** — All grout will adhere to whatever it contacts, including debris. Therefore, if the grout is to bond to the concrete, all contact surfaces should be thoroughly cleaned. Cored holes cut through the large aggregate in the concrete and are suitable for grouting after cleaning.

## V-1® Cement Based Grout

Cement grout must properly cure, not dry out. After cleaning the concrete surface, the foundation must be saturated with water for 24 hours.

## V-100® Epoxy Grout

Epoxy will bond best to a dry surface. Core drilling and all cleaning should be completed with enough time for the concrete to dry before grouting.

**2 FORMING** — Forms should allow rapid and continuous placement of grout. Forms need to be sealed water tight to the foundation. Good engineering practice is to have the forms placed at a distance from the equipment that is equal to the depth. Excessive areas of grout not under the equipment should be avoided. Allow sufficient space along one edge to place grout. Provide head boxes as required for long flows.

## V-1® Cement Based Grout

May be used neat, or extended with pea gravel for thicker pours.

## V-100® Standard Epoxy Grout

Two-part epoxy may be used for thinner pours, three-part epoxy for thicker pours. Epoxy will bond to itself, so multiple lifts may be used.

**3 TEMPERATURE** — In general, grout will cure and develop strength slowly at low temperatures, and cure and develop strength faster at high temperatures.

## V-1® Cement Based Grout

Do not allow to freeze. Refer to product data sheet for additional information.

## V-100® Standard Epoxy Grout

Specific epoxy formulations are available for temperature extremes. Refer to product data sheet for additional information.

**4 PLACEMENT** — To assure full support of the equipment, the grout should be placed from one side only, and allowed to flow to the other side, forcing air out ahead of it. The level of grout should be maintained above the bottom of the equipment on the side grout is being placed to avoid air pockets.

## V-1® Cement Based Grout

Measure water and never add more water and remix after initial set.

## V-100® Standard Epoxy Grout

Epoxy comes in pre-measured kits. Simply mix the resin, continue mixing while adding the hardner. For three-part kits, the aggregate is added last.

**5 CURING** — Forms should not be removed until after final set.

## V-1® Cement Based Grout

Avoid losing water from the fresh grout and stopping the cure cycle. Keep the surface moist with wet rags. Full strength is achieved at 28 days. Consult data sheet for rate of strength development.

## V-100® Standard Epoxy Grout

Keep dry. If outdoors, protect from rain until initial set. Full strength is achieved at 7 days. Consult data sheet for rate of strength development.

**6 CLEANUP** —

## V-1® Cement Based Grout

Clean up with water prior to initial set.

## V-100® Standard Epoxy Grout

Wipe epoxy off equipment prior to initial set.