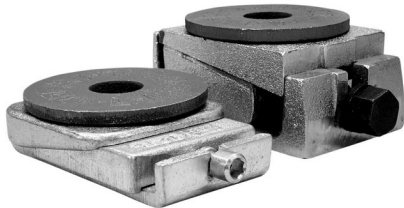


LL Machinery Mounts

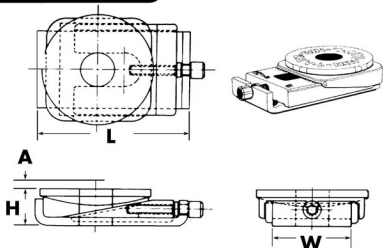
MACHINERY MOUNT



Levels machinery and compensates for uneven floors.

LEV-LINE® Machinery Mounts, with their patented, coined, malleable aligning disc, provide true self-alignment with absolutely even load distribution over the entire bearing surface. They are designed to compensate for uneven floors, and may be used with or without anchor bolts. Three mount sizes for wide load range.

LL-7



- ▶ Self-aligning disc compensates for uneven floors and provides equal distribution of weight over the entire bearing surface.
- ▶ True vertical levelling adjustment.
- ▶ Anchor bolt hole permits bolting machine to floor.

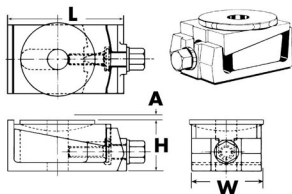
SPECIFICATIONS

LEV-L-LINE

MODELS	LL-7	LL-22	LL-33
Length (L)	5 ⁷ / ₈	5 ³ / ₈	6 ³ / ₄
Width (W)	3	3 ³ / ₄	4
Maximum Adjustment (A)	3 ¹ / ₁₆	3 ¹ / ₁₆	3 ¹ / ₁₆
Minimum Height (H)	1 ³ / ₄	2 ⁷ / ₈	3 ¹ / ₂
Anchor Bolt Hole	1 ¹ / ₄	1 ¹ / ₁₆	1 ¹ / ₈
Disc Diameter	4 ¹ / ₄	4 ¹ / ₄	4 ¹ / ₄
Load Capacity (lbs.)	7,000	22,000	33,000

All dimensions in inches.

LL-22 & LL-33



machine line
is level

floor line is sloped

UNISORB
INSTALLATION TECHNOLOGIES